

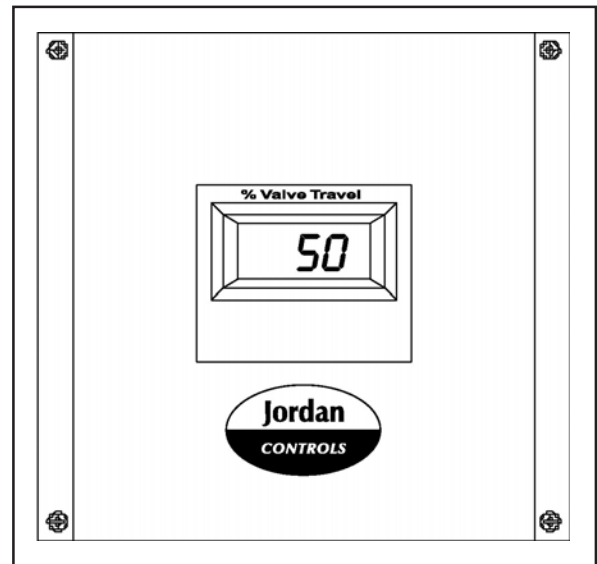
GENERAL DESCRIPTION

This remote mounted amplifier is specifically designed to operate with all EH-2000 Series actuators.

The AD-2000 has a liquid crystal display showing percentage of open for valve or damper position.

This amplifier accepts the command signal from a controller and provides a voltage output to move the actuator. The potentiometer position feedback from the actuator inputs to the AD-2000.

The AD-2000 will feedback to the customer's controller the position of the valve or damper with a 4-20 mA or 0-10 Vdc signal. When using the AD-2000, order the EH-2000 actuator without an amplifier.



FEATURES

- Accepts analog and voltage command signals
- Split range input
- Adjustable ZERO, SPAN and deadband
- 4-20 mA position feedback
- 120 or 240 Vac, field selectable
- Watertight enclosure
- Local calibration for remote actuators located in adverse conditions
- Full one year warranty

SPECIFICATIONS

Power:

Voltage Input: 120/240 Vac, 1Ph., 50/60 Hz.

Power Consumption: 3 VA

Fuse Protection: 5 Amperes

Command Signal Inputs: 4 to 20 mA current command into a 50 ohm impedance, or 0-10 Vdc. Split range input (4-12 mA, 12-20 mA) is available.

Position Feedback Signal: 4-20 mA or 0-10 Vdc (The output is not isolated from the signal input)

Position Signal Output: 4-20 mA or 0-10 Vdc

CE Marking: Conforms to requirements of EMC Directive and Low Voltage Directive

Enclosure: Cast Aluminum

Enclosure Rating: NEMA 13 (IP65)

Enclosure Rating With Output Indicator:
NEMA 12 (IP55)

Cable Entry: 4, NPT

Operating Temperature: -13° to 131°F (-25° to 55°C)

Adjustable: ZERO, SPAN and deadband setting

Approximate Weight: 4 lbs. (1.81 kg)

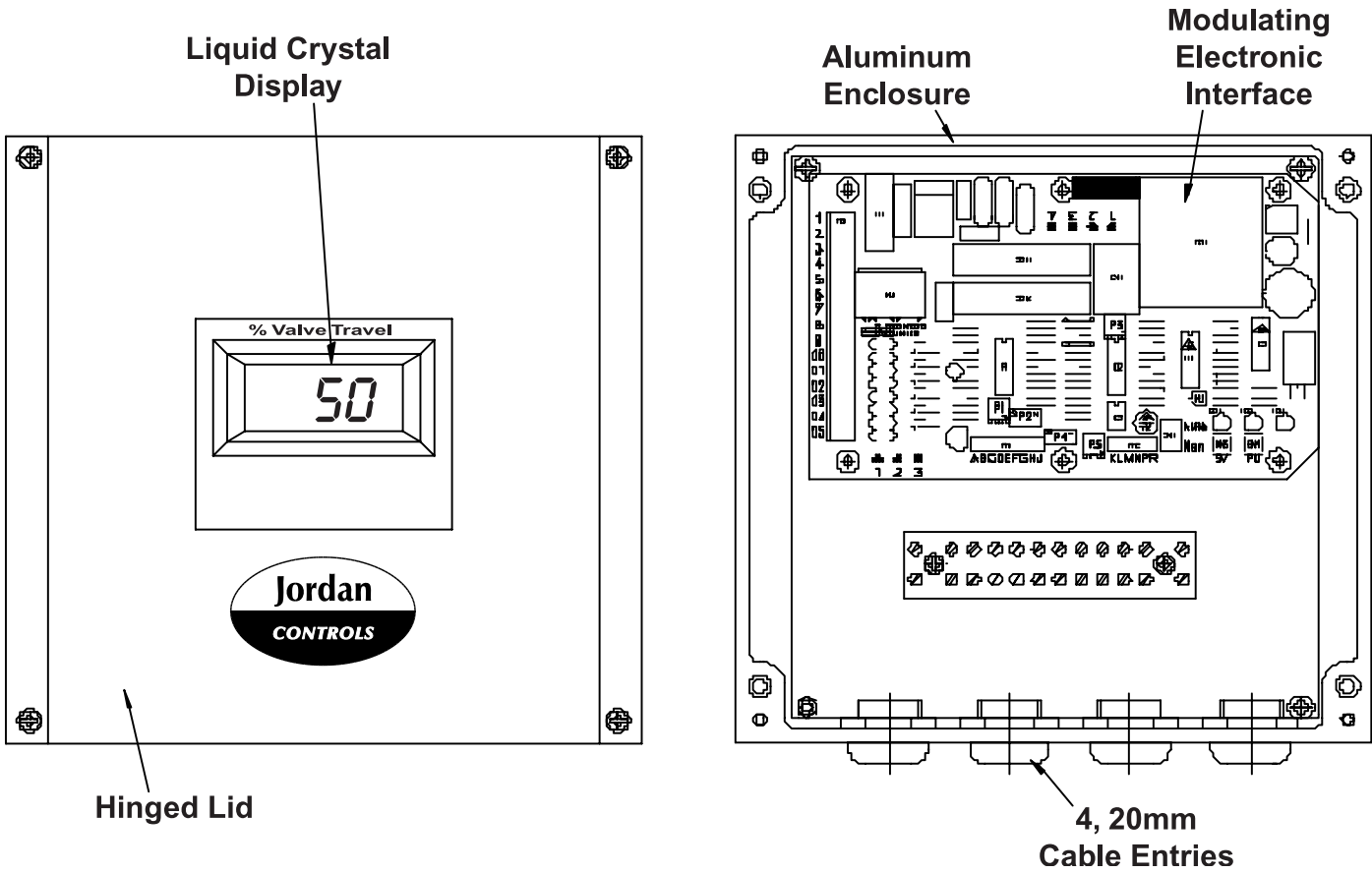
Remote Mounting Distance: 50 feet or less.
(Consult factory for longer runs.)

AD-2000 SERIES SELECTION CHART

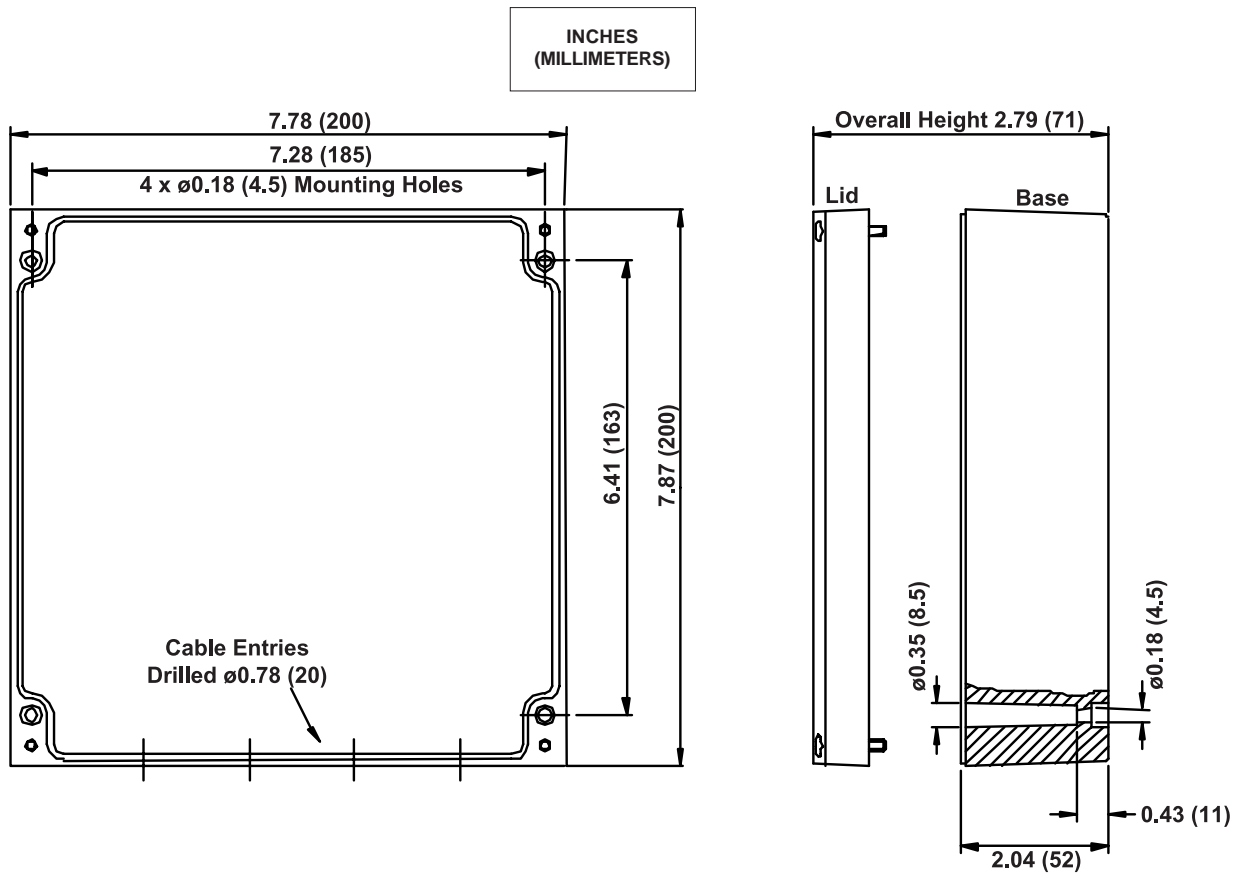
Selection

1	Basic Model	AD-2000-P	
2	Voltage Input	1: 120 Vac, 1Ph., 50/60 Hz. 2: 240 Vac, 1Ph., 50/60 Hz.	
3	Actuator Controlled	EH-2XXX (Complete model designation by filling in Xs)	
4	Input Signal	V: 0-10 Vdc M: 4-20 mA	

COMPONENT LOCATION

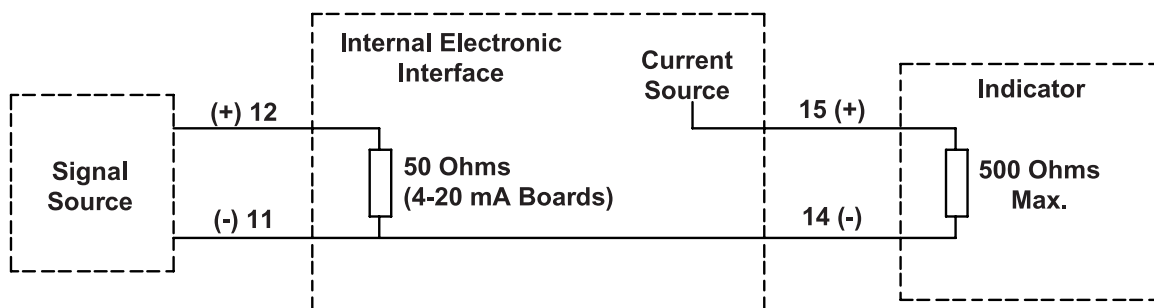


MAJOR DIMENSIONS



These dimensions are subject to change without notice and should not be used for preparation of drawings or fabrication of installation mounting. For current installation manuals and other product information, see www.jordancontrols.com.

TYPICAL WIRING DIAGRAM



NOTES:

1. Maximum wire run from amplifier to actuator must not exceed 50 feet.
2. Shielded wiring is required with the shield grounded at source common for all low level circuits. This includes command & feedback signals and position torque limit switches.
3. Wire size must allow for minimal voltage drop in wiring to the actuator motor, but not smaller than 14 AWC.

Due to wide variations in the terminal numbering of actuator products, actual wiring should follow the print supplied with the actuator and amplifier.