



## IQH Pro – High Speed Self Locking Actuator

Based on the multi-turn IQ actuator the IQH provides a range of high output speeds while being generally irreversible and therefore provides a self-locking\* ability by the actuator for the valve. Developed for diverter valves in meter prover applications, IQH provides fast operation with positive seating without backdriving.

### IQH Pro actuators offer the following powerful features:

- Multi-turn and quarter-turn
- High speed - self locking capability
- Non-intrusive set-up
- Clear user friendly controls and indication
- Simplified torque and position control for increased reliability
- Flexible and comprehensive control and indication
- On-board datalogger
- IrDA compatible for local and remote actuator analysis via PC
- IQ insight & IQ Pocket Insight software tools for set-up, analysis, asset management and diagnostics

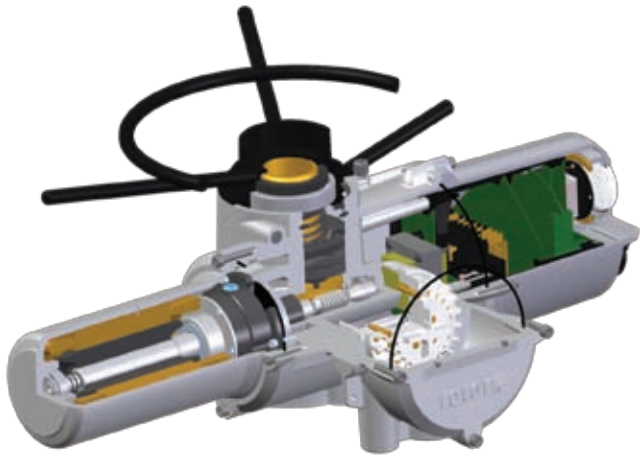
### Setting Tool *Pro* features:

- Stores downloaded data for analysis with InSight software on PC's.
- Fast, easy configuration of multiple actuators on site using transferrable settings feature.
- Intrinsically Safe robust construction.

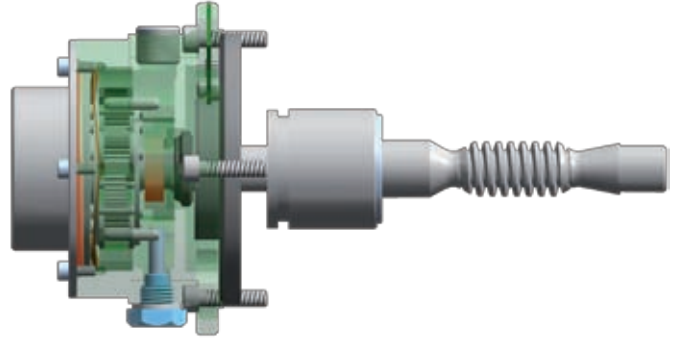


# IQH Pro Range

## IQH Pro



## IQH Pro epicyclic gearbox



**\*Note:** It should be noted that a self-locking ability cannot be guaranteed for worm and wheel drives under all conditions including high loads and vibration, either under static and dynamic conditions. When handwheel operation is selected the gear train is disconnected and therefore any locking ability will be lost.

### The IQH epicyclic gearbox

Fast operation is achieved by using a 1:3 step up epicyclic gearbox between the 2-pole motor and worm gearbox. This is mature design having been implemented in the IQ design of the 1990's.

## IQH Pro Features

IQH Pro actuators use the new Rotork IQ and IQT Pro main board to provide the following powerful features:

- Larger clearer icon and text display.
- Customer configurable multilingual text capability.
- Datalogger valve torque signature profiling.
- Status & monitoring diagnostics.
- Retrofittable to existing IQ & IQT actuators manufactured since 2000.
- Improved data download speed x10.

### The Rotork Setting Tool Pro features include:

- Non-intrusive, Infra red communication.
- Intrinsically safe for use in hazardous areas.
- On site actuator configuration and data download.
- Data transfer from actuator to PC with free Rotork Insight software\*
- Capacity for 10 configuration and 4 datalogger files.
- Multiple configuration capability.
- Compatible with all IQ & IQT actuators.

## Multi Language Text and Icon Display



The IQH Pro range features a new larger and clearer multilingual text and icon display. The descriptive text can now be configured for a number of languages, with each language module downloadable from the rotork website. Once the appropriate languages have been downloaded they can be uploaded to the actuator using the Setting Tool Pro.

The new ergonomically designed and intrinsically safe Rotork Setting Tool Pro is compatible with all existing IQ and IQT range actuators and is safe for use in any environment / hazardous location.

## Setting Tool Pro Download & Upload



The Rotork Setting Tool Pro includes a feature which allows the user to extract and store IQ and IQT actuator configuration and datalogger files within the Tool. Stored files can be viewed using a PC running IQ Insight<sup>®</sup>. Using This tool, stored configuration files can also be uploaded back to IQ and IQT actuators in order to replicate a setup for multiple units (limits must be set individually).

IQ Insight is available free from [www.rotork.com](http://www.rotork.com)

For further information on IQ Pro features, see publication E1120E.

\* Note: Setting Tool Pro data transfer capability is compatible with IQ actuators supplied since 2000.

## IQH Pro Specification

The IQH Pro has the same specification as the IQ, described fully in Publication E110E.

### General

Enclosure Non- hazardous	IEC - IP 68 – 7m / 72 hrs, NEMA 4, 4X & 6
Enclosure Hazardous	ATEX, FM, CSA or IEC (For other specific certification, contact Rotork)
Temperature	-30 to +70 °C (see E110E for full ranges and certification limitations)
Power Supplies	3 – Phase supplies only
Mounting Interface	ISO 5210, MSS - SP102
Lubrication	Oil bath lubrication with sealed lubricated epicyclic gear.
Handwheel	Top Direct Drive, option side mounted geared handwheel
Conduit/cable entries	2 x 1" & 1 x 1 1/4". ASA NPT (2 x M25 & 1 x M40)
Orientation	Any
Finish	Polyester powder coating. 2-Pak epoxy available as an option.

### Indication

Remote Indication	4 x configurable "S" contacts Option for additional 4 contacts
Remote indication options	4-20mA auto-scaling position output (CPT). Network control options include position and alarm status indication

### Duty Cycle

Duty cycle S2, 25% -15min, 60 starts per hour at 33% of rated torque.

### System

Set-up	Non intrusive Infra-red using the Rotork Setting Tool (supplied)
Local Display	LCD position indication (% open) plus set up and alarm displays.
Limit switching	2.5 to 100,000 turns, max resolution 7.5°
Torque switching	Independently adjustable open and close torque switches can be set in the range 40% to 100% rated torque. "Boost" can be set in the opening direction.
Datalogger	Standard: Torque, starts, statistics and event logs

### Support Tools

Support Tools	PC Software: IQ Insight PDA software: IQ Pocket Insight
---------------	--

### Control

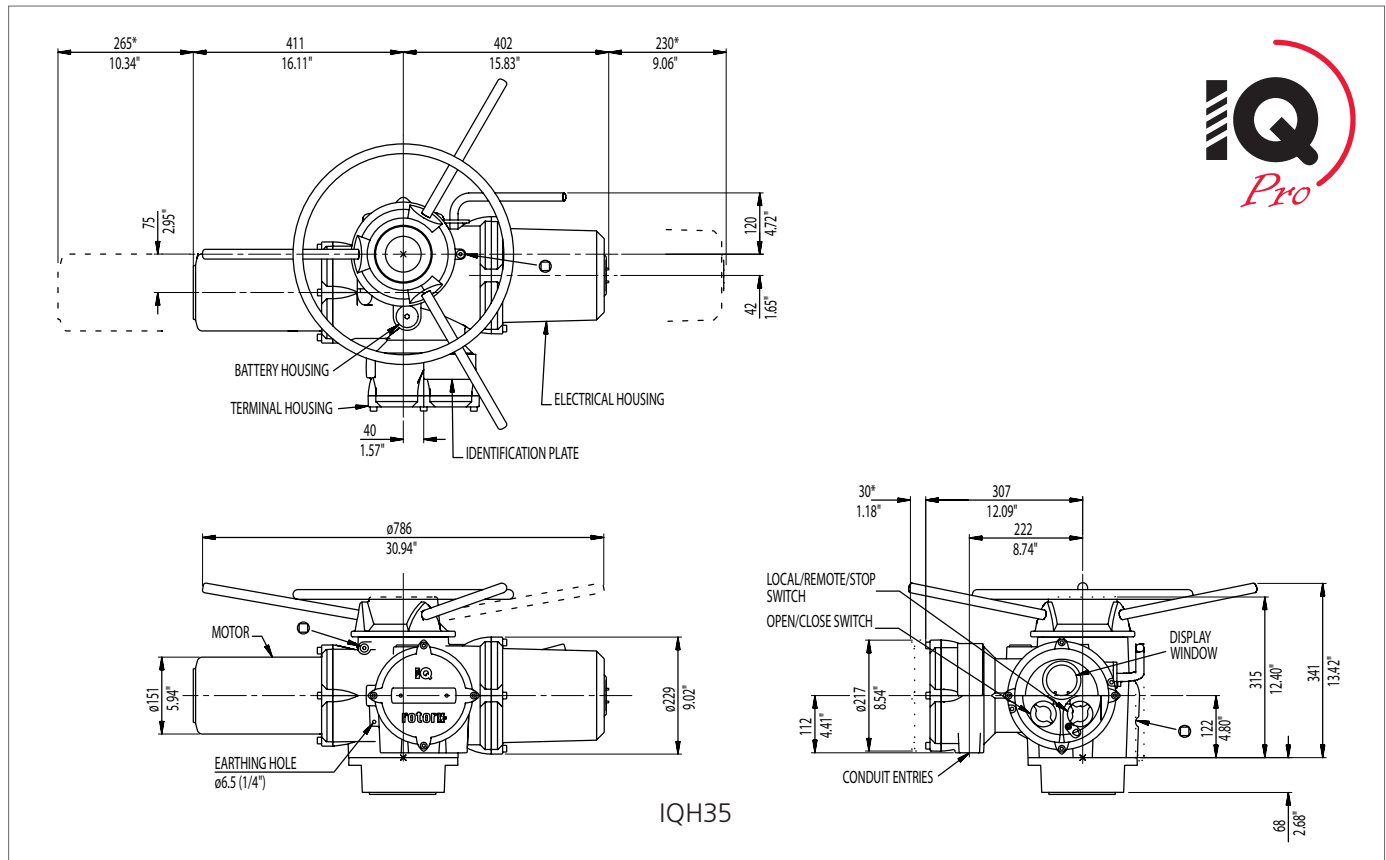
Base wiring diagram	3000-000
Local Control	Non-intrusive "Local-stop-remote" and "open-close" selectors
Remote control	Hardwired "open", "close", "stop", "ESD" plus "open" and "close" Interlock facility.
Remote control options	Analogue 4-20mA - Folomatic,
Network control options	Pakscan 2-wire control, Modbus, Profibus, Foundation Fieldbus, DeviceNet

## Performance data

	Actuator output speeds		
	108	144	216
	130	173	259
Final gear ratio	80:1	60:1	40:1
Actuator size	Torque**	Nm	Ft lbf
	IQH20	75	75
	55	55	50
IQH25	108	98	83
	80	72	61
IQH35	202	182	153
	149	134	113
IQH40	397	347	240
	293	256	177

\*\* Torque rating is maximum torque setting in both directions.  
Stall torque will be 1.4 to 2 times this value depending on speed and voltage

## IQH Pro Dimensional Data



IQH supporting documents and software are available for download at [www.rotork.com](http://www.rotork.com)

PC Software IQ Insight, PDA software: IQ Pocket Insight available for free download  
 E110E IQ & IQT Catalogue  
 E120E IQ & IQT Control and Monitoring

E135E IQT electric motor performance data  
 E170E3 IQT Installation & Maintenance Instructions  
 E117E IQ Insight software  
 Dimensions Available in PDF and DXF format in IQ range - Specifications