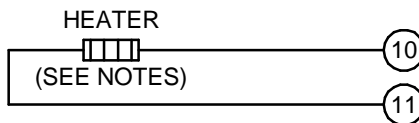
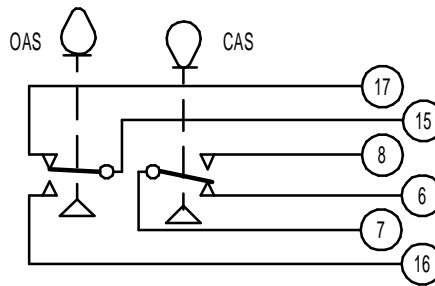
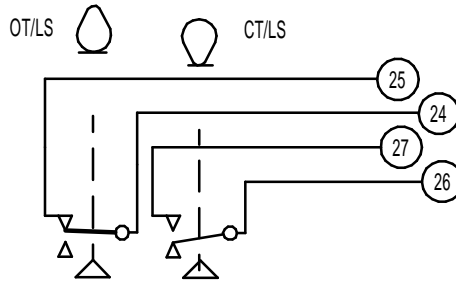
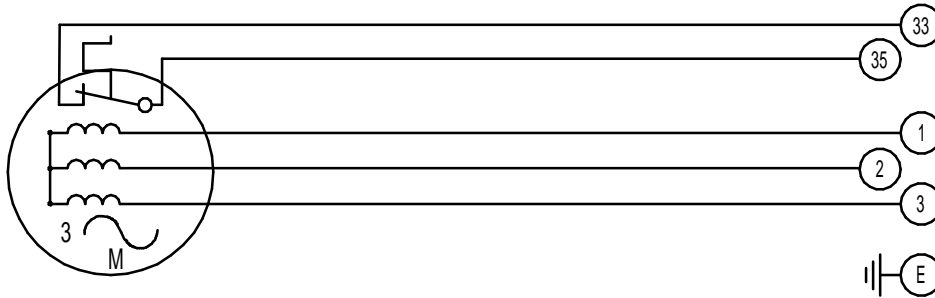


CIRCUIT IS DRAWN FOR A VALVE IN THE FULLY CLOSED POSITION

CIRCUIT IS DRAWN FOR A VALVE IN THE FULLY CLOSED POSITION



Circuit Diagram No - Issue No  
**5S30Q00A - 1**

THERMOSTAT

3 PHASE SUPPLY

OT/LS - OPEN TORQUE/LIMIT SWITCH.  
CT/LS - CLOSE TORQUE/LIMIT SWITCH.  
OAS - OPEN AUXILIARY SWITCH.  
CAS - CLOSE AUXILIARY SWITCH.

WIRES ARE IDENTIFIED AT EACH END BY  
TERMINAL NUMBER OR NUMBER SHOWN.

ALLOW MINIMUM 2 SECOND DELAY  
WHEN CONTROL SIGNALS ARE REVERSED  
TO ENSURE MOTOR REVERSAL.

**WARNING**

IT IS ESSENTIAL THAT REMOTE  
CONTROL CIRCUITS ARE DESIGNED  
SO THAT AN OPEN AND A CLOSE  
SIGNAL CAN NEVER BE APPLIED  
SIMULTANEOUSLY.

12W (MAX) HEATER FITTED AS STANDARD.  
UNLESS OTHERWISE REQUESTED, HEATERS  
FITTED WILL BE : 240V (5.62K OHM).

Iss	Date	Chkd	Revision Details
01	180118	JS	FIRST PRODUCTION ISSUE

**www.rotork.com**

ROTORK CONTROLS (INDIA) PRIVATE LTD  
28B, AMBATTUR INDUSTRIAL ESTATE (NORTH),  
AMBATTUR, CHENNAI - 600 098 INDIA.  
Tel:044-39555600

Q - 3 PHASE STANDARD + HEATER	
Drawn by: JS Date : 020490 Base WD: 2S00Q00 Job No : --- MI No : ..	Circuit Diagram No <b>5S30Q00A</b> Issue No <b>1</b>