

CIRCUIT IS DRAWN FOR A VALVE IN THE FULLY CLOSED POSITION

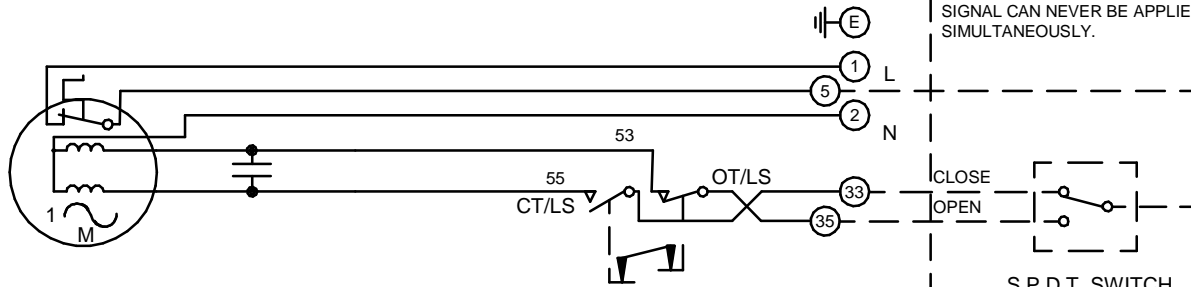
CIRCUIT IS DRAWN FOR A VALVE IN THE FULLY CLOSED POSITION

Circuit Diagram No - Issue No

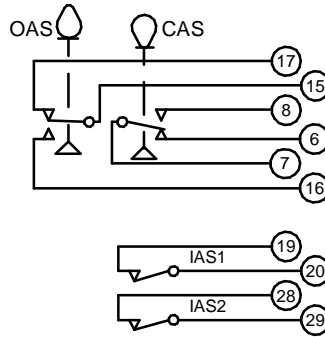
2S05Q00A - 06

WARNING

IT IS ESSENTIAL THAT REMOTE CONTROL CIRCUITS ARE DESIGNED SO THAT AN OPEN AND A CLOSE SIGNAL CAN NEVER BE APPLIED SIMULTANEOUSLY.



S.P.D.T. SWITCH OR EQUIVALENT



OT/LS - OPEN TORQUE/LIMIT SWITCH.
 CT/LS - CLOSE TORQUE/LIMIT SWITCH.
 OAS - OPEN AUXILIARY SWITCH.
 CAS - CLOSE AUXILIARY SWITCH.
 IAS1 & 2 - INTERMEDIATE AUXILIARY SWITCHES ADJUSTABLE TO MAKE OR BREAK INDIVIDUALLY AT ANY POSITION.
 WIRES ARE IDENTIFIED AT EACH END BY TERMINAL NUMBER OR NUMBER SHOWN.
 ALLOW MINIMUM 2 SECOND DELAY WHEN CONTROL SIGNALS ARE REVERSED TO ENSURE MOTOR REVERSAL.

| Iss | Date | Chkd | Revision Details |
|-----|--------|------|--|
| 04 | 190292 | T.W | WARNING NOTE ADDED. CHECKED K.S 190292 |
| 05 | 260417 | JS | PAK TERMINAL BUNG INTRODUCED FOR WTC APPLICATION EC7024. |
| 06 | 240220 | JS | Q GLOBAL CERTIFICATION CHANGE EC8618. |

www.rotork.com

| | |
|---|---|
| ROTORK CONTROLS LTD BATH, BA1 3JQ ENGLAND Tel:01225-733200 | ROTORK CONTROLS INC ROCHESTER NY 14624, USA Tel:585-247-2304 |
|---|---|

Q - STANDARD + 2 INTERMEDIATE SWITCHES.

| | |
|--|---|
| Drawn by: K.S Date : 020490 Base WD: 2S05Q00A Job No : --- MI No : . | Circuit Diagram No 2S05Q00A Issue No 6 |
|--|---|