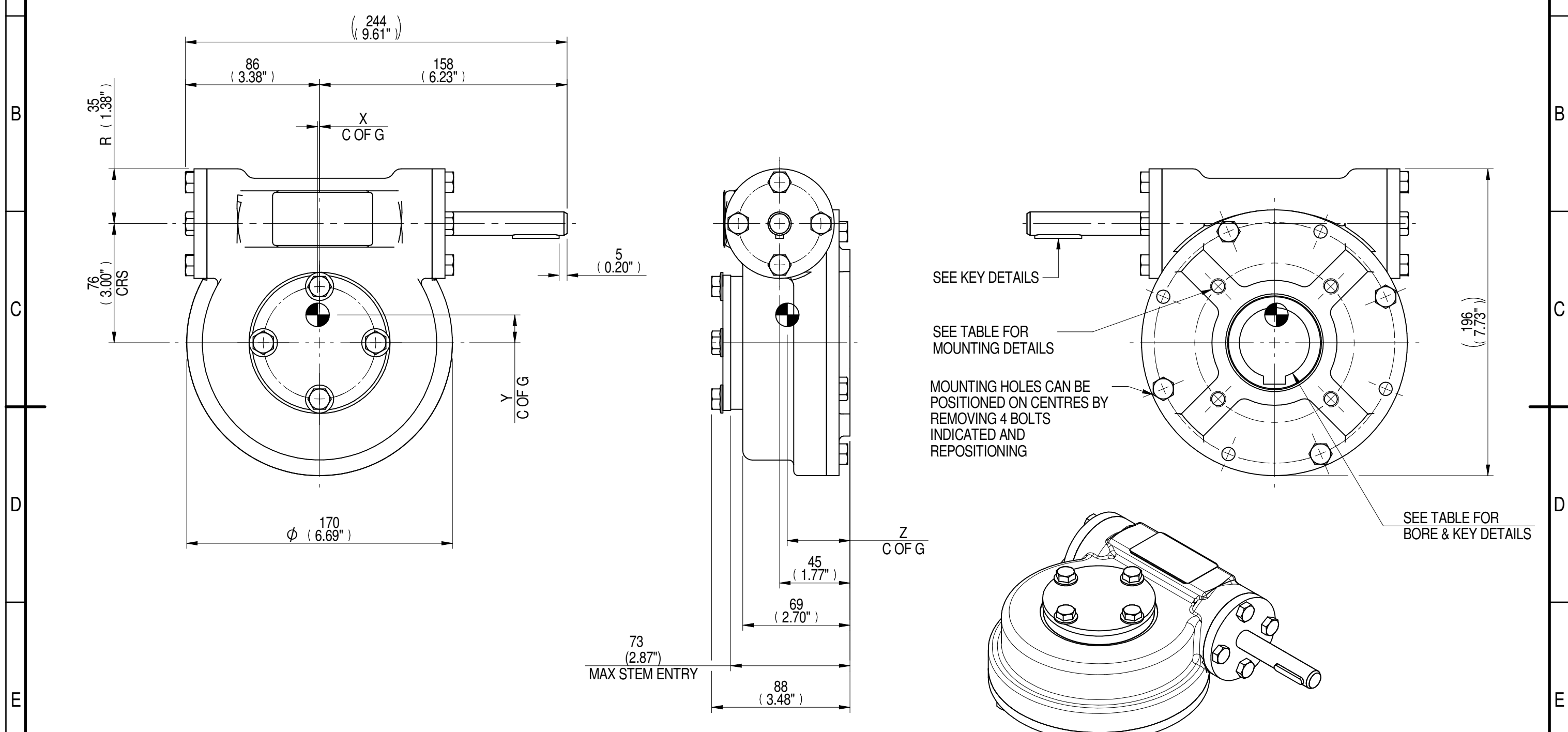
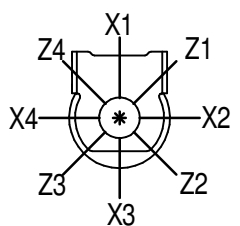


1	2		3		4		5		6			7		8	
INPUT FLANGE DETAILS							MOUNTING HOLES - BOLT CIRCLE (OFF CENTRES)								
INPUT FLANGE	FLANGE O/DIA. + THICKNESS	SHAFT DIA.	RECESS DIA.	RECESS DEPTH	HOLE DETAILS (45° OFF CENTRES)	KEY DETAILS	ISO 5211 / MSS SP-101 MOUNTING OPTION	HOLE DETAILS (45° OFF CENTRES)	STANDARD	MIN BORE	SQ KEY MAX BORE	SQ KEY SIZE	RECT. KEY MAX BORE	RECT. KEY SIZE	SQ BORE MAX
-	-	Ø15.00-0.07 (Ø0.591"-0.003")	-	-	-	5x5x30 (0.20"x0.20"x1.18")	ISO F10*	4 x M10 x 18 (0.71") DEEP ON Ø102.0 (Ø4.02") P.C.	BS4235	-	-	-	45.0	14 x 9	□ 36.0 (1.42")
-	-	-	-	-	-	-	FA10*	4 x 3/8" UNC x 18 (0.71") DEEP ON Ø102.0 (Ø4.02") P.C.	BS46	-	1.625"	7/16" SQ.	1.75"	7/16" x 5/16"	
-	-	-	-	-	-	-	-	-	ANSI B17.1	-	1.750"	3/8" SQ.	1.75"	3/8" x 1/4"	
-	-	-	-	-	-	-	-	-	DIN 6885	-	-	-	45.0	14 x 9	-



PLAN VIEW OF GEARBOX IN CLOSED POSITION SHOWING STANDARD KEYWAY POSITIONS. ALTERNATIVES AVAILABLE ON REQUEST



NOTES:
 1. * THREAD DEPTH DOES NOT MATCH ISO STANDARD
 2. CENTRE OF GRAVITY POSITION IS INDICATIVE FOR STANDARD BUILD WHEN IN POSITION SHOWN

RATIO	M.A. ± 10%	WEIGHT (Kg)	MAX OUTPUT (Nm)	MAX INPUT (Nm)	X	Y	Z
70	23	9	712	31	1	18	40
40	15	9	712	47	1	19	40
DESCRIPTION			TORQUE		CENTRE OF GRAVITY		

AS PART OF CONTINUOUS PRODUCT DEVELOPMENT, ALL DETAILS SUBJECT TO CHANGE WITHOUT PRIOR NOTICE. FOR UP TO DATE DETAILS PLEASE VISIT www.rotork.com

<p>LEEDS - UK www.rotork.com</p>	<p>This drawing is confidential and is the property of Rotork Gears and must not be reproduced either wholly or partly. All rights in respect of patents, designs and copyrights are reserved. ©2015</p>	<p>Document Type PUBLICITY</p> <p>Dimensions in mm</p>	<p>Title MTW3 MULTI TURN GEARBOX, 40/ 70:1 MANUAL INPUT, F10/FA10 OUTPUT</p>
		<p>Drawing Number PUB-MTW3-MAN-F10</p>	<p>Iss. 01</p>