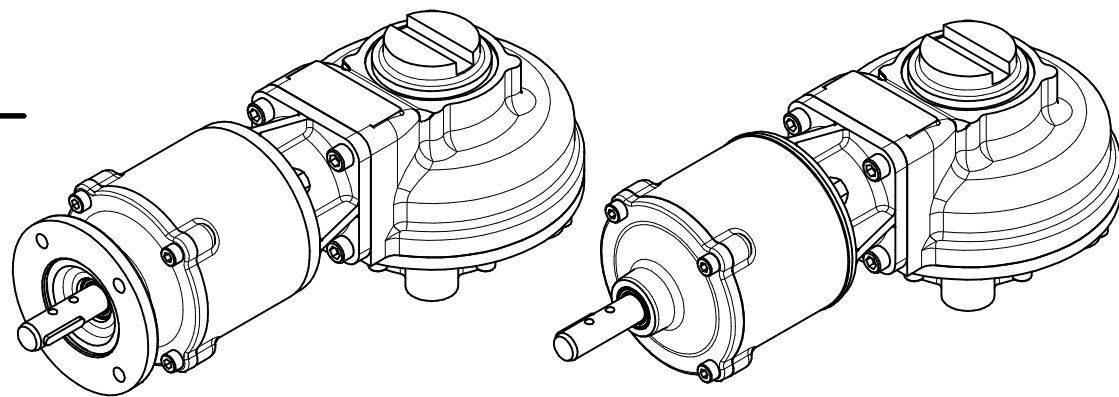
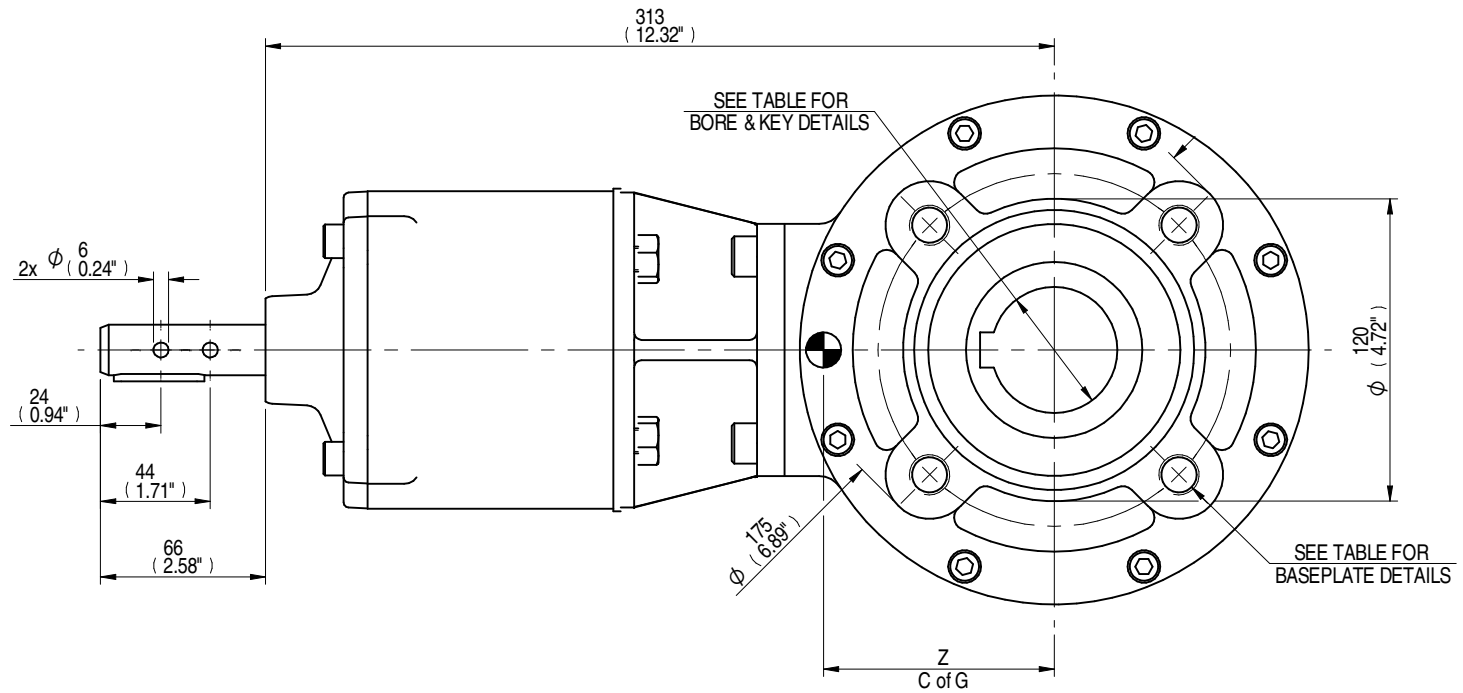


E-FLANGE INPUT



E-FLANGE INPUT  
ISOMETRIC VIEW  
1:5

STANDARD INPUT  
ISOMETRIC VIEW  
1:5



STANDARD INPUT

NOTES:  
MPR IS NOT SUITABLE FOR MOTORISED APPLICATIONS.

COMMON INPUT DETAILS		E-FLANGE INPUT DETAILS			
SHAFT DIA.	KEY DETAILS	FLANGE O/DIA.	RECESS DIA.	RECESS DEPTH	HOLE DETAILS (45° OFF CENTRES)
Ø19.98-0.05	6x6x36	Ø126	Ø70.05+0.05	3	4 HOLES Ø10.5 ON Ø102.0 P.C.
(Ø0.787"-0.002")	(0.24"x0.24"x1.42")	(Ø4.96")	(Ø2.758"+0.002")	(0.12")	4 HOLES Ø0.41" ON Ø4.02" P.C.

STANDARD	MOUNTING HOLES - BOLT CIRCLE (OFF CENTRES)	
	SPIGOT DIAMETER	HOLE DETAILS (45° OFF CENTRES)
ISO F14	Ø99.95-0.05 (Ø3.935"-0.002")	4 HOLES M16x20 (0.79") DEEP ON Ø140.0 (Ø5.51") P.C.
FA14	Ø95.22-0.10 (Ø3.749"-0.004")	4 HOLES 5/8"UNCx20 (0.79") DEEP ON Ø139.7 (Ø5.50") P.C.

MAX BORE SQ KEY			MAX BORE RECTANGULAR KEY		MAX. STEM SCREW ACCEPTANCE DIA.
STD	BORE	KEY	BORE	KEY	
BS4235	-	-	52.0	16x10	55 (2.125")
BS46	1.875"	1/2" SQ	2.000"	1/2" x 5/16"	
ANSI B17.1	1.875"	1/2" SQ	2.000"	1/2" x 3/8"	

DESCRIPTION		TORQUE			C of G		
MPR	RATIO	OUTPUT	INPUT	MA	X	Y	Z
MPR4	16.7:1	850 Nm	70 Nm	12.1	0	20	92

AS PART OF CONTINUOUS PRODUCT DEVELOPMENT, ALL DETAILS SUBJECT TO CHANGE WITHOUT PRIOR NOTICE. FOR UP TO DATE DETAILS PLEASE VISIT [www.rotork.com](http://www.rotork.com)

 <b>LEEDS - UK</b> <a href="http://www.rotork.com">www.rotork.com</a>	This drawing is confidential and is the property of Rotork Gears and must not be reproduced either wholly or partly. All rights in respect of patents, designs and copyrights are reserved. © 2014		Document type <b>PUBLICITY</b>	Mass 24.20 kg	Title <b>HOB5 GEARBOX</b> <b>MPR4 MANUAL INPUT REDUCER F14/FA14 OUTPUT</b>
	Dimensions in mm Scale 1:3		Created <b>J. DICKINSON</b> <b>22/04/2014</b>	Drawing Number <b>PUB-HOB5MPR4-F14</b>	
	Checked <b>T. WITAMORE</b> <b>14/05/2014</b>	Approved <b>-</b> <b>-</b>		Rev <b>A</b>	

Rev	CN	Revised	Approved	Date	Change Description
A	-	-	-	22/04/2014	FIRST ISSUE