

## Toggles, Lights

**A001** Local Auto/Manual Toggle Switch - NEMA 4. Switch for Auto (i.e. 4-20 mA from control room), or Manual (local control at actuator). Switch is maintain type.



**A002** INCREASE/OFF/DECREASE Toggle Switch - NEMA 4. Momentary toggle type switch for local control of actuator.



**A003** Local Auto/Manual Toggle Switch & INCREASE/OFF/DECREASE Toggle Switch - NEMA 4. (A001 & A002) (See photos for A001 & A002)

**A004** Open-Close-Stop Push Buttons - NEMA 4. Three pushbutton control. Open & Close momentary type pushbutton with maintain type Stop button (pull to release)

**A005** Two Pilot Lights - NEMA 4. Used for indication of ends of travel or intermediate position.



**A006** Two Position Selector Switch, NEMA 4 (Auto/Manual). Switch for Auto (i.e. 4-20 mA from control room), or Manual (local control at actuator). Switch is maintain type.



**A007** INCREASE/OFF/DECREASE Three Position Selector Switch. NEMA 4 momentary type switch for local control of actuator.



**A008** Local Auto/Manual, INCREASE/OFF/DECREASE (Close Coupled Enclosure). Option A003 mounted in a NEMA 4 enclosure.

**A009** ON/OFF Toggle Power Switch - NEMA 4. Removes main power to the actuator for single phase input.

**A010** Local Auto/Manual Switch & (INCREASE/OFF/DECREASE) Switch - NEMA 4 (See photos for A006 & A007)

**A011** Key lock for rotary switches - NEMA 4 (Auto/Manual). Manual operation only after unlocked.

**A012** ON/OFF NEMA 4 Toggle Power Switch. Removes main power to the actuator for single phase input.

**A013** Local Auto/Manual (Close Coupled Enclosure) Option A001 mounted in a NEMA 4 enclosure.

**A014** INCREASE/OFF/DECREASE (Close Coupled Enclosure) Option A002 mounted in a NEMA 4 enclosure.

**A015** ON/OFF Toggle Switch (Power) (Close Coupled Enclosure) Option A009 mounted in a NEMA 4 enclosure.

**A016** Fault Indicator Light (SM-6000 Series)

**A017** Power Indicator Light (SM-6000 Series)

**A018** Auto/Manual Indicator Light (SM-6000 Series)

**A031** Auto/Manual Switches (JOM2-N, JOM3-N), 1 Ph.

**A032** Auto/Manual Switches (JOM4-N, JOM5-N, JOM6-N), 1 Ph.

**A033** Auto/Manual Switches (JOM7-N, JOM8-N), 1 Ph.

**A034** Auto/Manual Switches (JOM2-N, JOM3-N), 3 Ph.

**A035** Auto/Manual Switches (JOM4-N, JOM5-N, JOM6-N), 3 Ph.

**A036** Auto/Manual Switches (JOM7-N, JOM8-N), 3 Ph.

## Brakes

**B001** 120 Vac Electrically Operated Brake. Electronically released brake, HOLDS when there is no power to HOLD a load, or to minimize coasting of the actuator. (Used on units with a high RPM rating). See drawing on page 186.

**B002** 240 Vac Electrically Operated Brake. Electronically released brake, HOLDS when there is no power to HOLD a load, or to minimize coasting of the actuator. (Used on units with a high RPM rating).. See drawing on page 186.

**B003** Drag Brake (will decrease torque rating, contact factory for rating). Mechanical drag brake mounted on motor shaft to minimize coasting and to HOLD a load. (Used on units with a high RPM rating).

**B004** Drag Brake (800 lbs. maximum thrust). Mechanical drag brake mounted on motor shaft to minimize coasting.

## Connectors

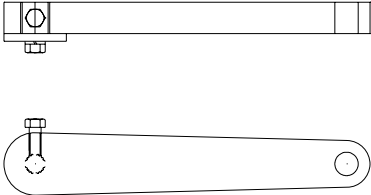
**C001** Quick disconnect NEMA 4 connector on enclosure for power and control.

**C002** Mating quick disconnect NEMA 4 connector on enclosure for power and control. (For use with C001).

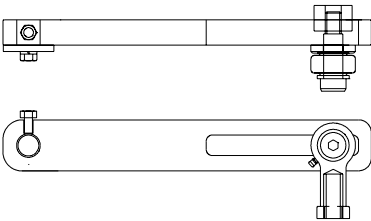
# OPTIONS

## Drive Arm/Adapter Clevis/Driven Arm

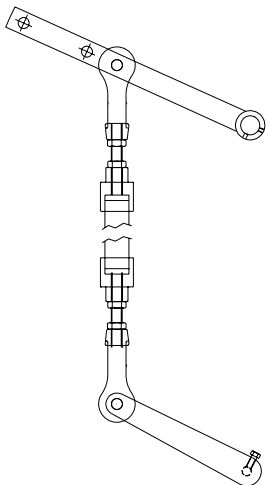
**D001** Fixed (10") drive arm for splined shaft of SM-1700 and SM-5100. Pinhole diameter of 0.75 in. and thickness of 1.0 in.



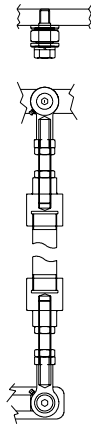
**D002** Adjustable drive arm for splined shaft of SM-1700 and SM-5100. Adjustable range of 6 in. - 10 in., with a 3/4-16 R.H. mating rod end.



**D003** Adapter clevis kit used with D001 & D005 for splined shaft of SM-1700 and SM-5100. Female clevis ends with a pinhole diameter of 0.75 in. and width of 1.0 in.



**D004** Adapter clevis kit used with D002 & D006 for splined shaft of SM-1700 and SM-5100. Threaded ends of 3/4-16 to meet with rod ends.



**D005** Driven arm used with D001 and D003. 1.0 in. width driven arm with 1.0 in. diameter pin holes at 10, 12.25 and 17. End bored to 1.0 in. for damper shaft.



**D006** Driven arm used with D002 and D004. 1.0 in. width driven arm with 5/8-11 in. taps at 10, 12.25 and 17 in. End bored to 1.0 in. for damper shaft.



**D007** Fixed (10") drive arm for splined shaft of SM-5200. Pinhole diameter of 1.0 in. and thickness of 1.50 in. See drawing for D001.

**D008** Adjustable drive arm for splined shaft of SM-5200. Adjustable range of 6 in. - 10 in., with a 1 1/4-12 R.H. mating rod end. See drawing for D002.

**D009** Adapter clevis kit used with D007 and D011 for splined shaft of SM-5200. Female clevis ends with a pinhole diameter of 1.0 in. and width of 1.50 in. See drawing for D003.

**D010** Adapter clevis kit used with D008 and D012 for splined shaft of SM-5200. Threaded ends of 1 1/4-16 to meet with rod ends. See drawing for D004.

**D011** Driven arm used with D007 and D009. 1.50 in. width driven arm with 1.0 in. diameter pin holes at 10, 12.25 and 17 in. End bored to 0.25 pilot for damper shaft. See drawing for D005.

**D012** Driven arm used with D008 and D010. 1.5 in. width driven arm with 3/4-10 taps at 10, 12.25 and 17 in. End bored to 0.25 pilot for damper shaft. See drawing for D006.

**D013** Fixed (12") drive arm for splined shaft of SM-5300. Pinhole diameter of 1.0 in. and thickness of 1.50 in. See drawing for D001.

**D014** Adapter clevis kit used with D013 and D015 for splined shaft of SM-5300. Female clevis ends with a pinhole diameter of 1.0 in. and width of 1.50 in. See drawing for D003.

**D015** Driven arm used with D013 and D014. 1.50 in. width driven arm with 1.0 in. diameter pin holes at 12, 14.7 and 20.4 in. End bored to 1.938/1.940 in. for damper shaft. See drawing for D005.

# OPTIONS

## Drive Arm/Adapter Clevis/Driven Arm

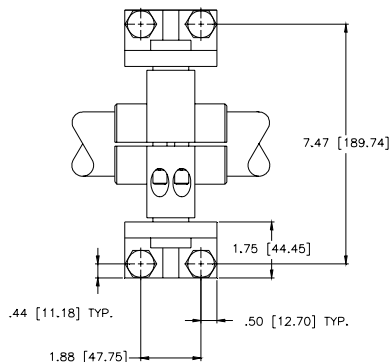
- D016** Fixed (15") drive arm for splined shaft of SM-5400. Pinhole diameter of 1.0 in. and thickness of 1.50 in. See drawing for D001.
- D017** Adapter clevis kit used with D016 and D018 for splined shaft of SM-5400. Female clevis ends with a pinhole diameter of 1.0 in. and width of 1.50 in. See drawing for D003.
- D018** Driven arm used with D016 and D017. 1.50 in. width driven arm with 1.0 in. diameter pin holes at 15, 18.38 and 25.5. End bored to 0.25 pilot for damper shaft. See drawing for D005.
- D019** Hagan Bailey Pneumatic Replacement (Pedestal Drive Arm) for SM-1700. Retrofit pedestal and drive arm to match Hagan and Bailey pneumatic drives up to 200 ft. lbs. of torque. Allows use of existing linkage and mounting. See D022 photo.
- D020** Hagan Bailey Pneumatic Replacement (Pedestal Drive Arm) for SM-5100. Same as D019, but up to 300 ft. lbs. of torque. See D022 photo.
- D021** Hagan and Bailey Pneumatic Replacement (Pedestal Drive Arm) for SM-5200. Same as D019, but up to 1,000 ft. lbs. of torque. See D022 photo.
- D022** Hagan and Bailey Pneumatic Replacement (Pedestal Drive Arm) for SM-5300. Same as D019, but up to 3,200 ft. lbs. of torque.



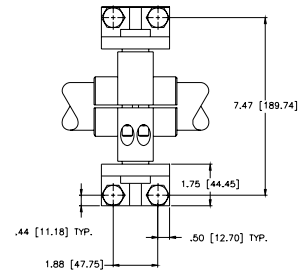
- D023** Hagan and Bailey Pneumatic Replacement (Pedestal Drive Arm) for SM-5400. Same as D019, but up to 12,500 ft. lbs. of torque. See photo for D022.
- D024** Wedglock Coupling for the SM-1700. Three piece coupling that allows adjustment of actuator and valve/damper without removal of either from the mounting bracket.



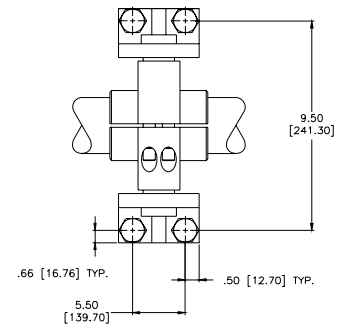
- D025** Wedglock Coupling for SM-5100. See description and photo of D024.
- D026** Wedglock Coupling for SM-5200. See description and photo of D024.
- D027** Wedglock Coupling for SM-5300. See description and photo of D024.
- D028** Wedglock Coupling for SM-5400. See description and photo of D024.
- D029** PT-1300 Mounting Kit. Universal mounting kit for sliding stem valves.
- D030** Trunnion Mount for LA-2300. Allows actuator to be foot mounted. (Not available for 6 in. stroke).



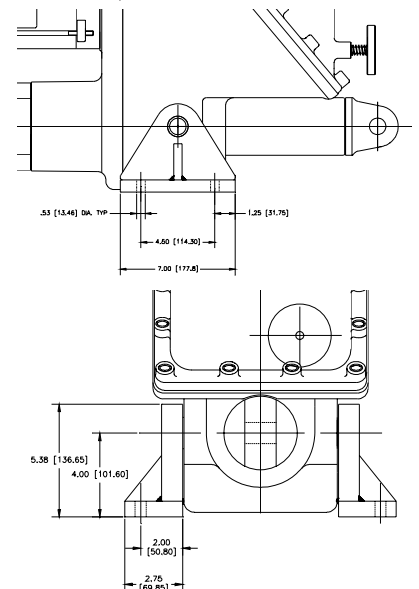
- D031** Trunnion Mount for LA-2400. Allows actuator to be foot mounted. (Not available for 6 in. stroke).



- D032** Trunnion Mount for LA-2500. Allows actuator to be foot mounted. (Not available for 6 in. stroke).

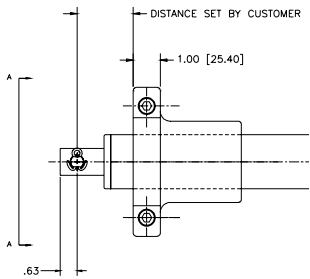
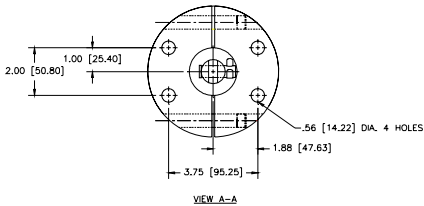


- D033** Trunnion Mount for LA-2600. Allows actuator to be foot mounted. (Available up to 3,600 lbf)

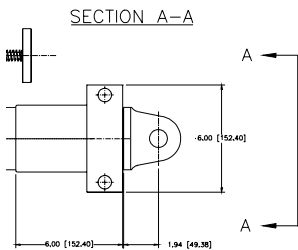
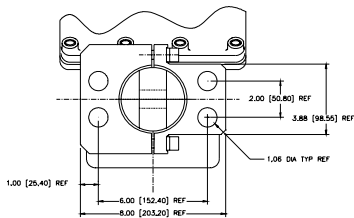


## Drive Arm/Adapter Clevis/Driven Arm

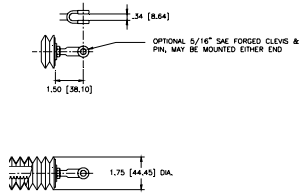
**D034** Flange Mount for LA-2300. Mounting bracket which clamps to the tube of the actuator with a four bolt mounting face. (Not available for 6 in. stroke).



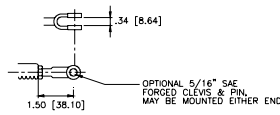
**D035** Flange Mount for LA-2600 and LA-2700. Mounting bracket which clamps to the tube of the actuator with a four bolt mounting face. (Available up to 3,600 lbf).



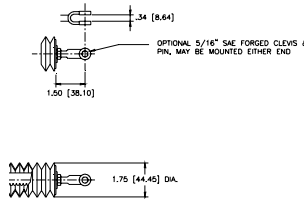
**D036** Rack Bellows for LF-1210. Boot that protects the rack from dirt and moisture.



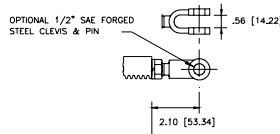
**D037** Female clevis with pin for LA-1100.



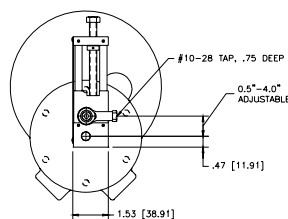
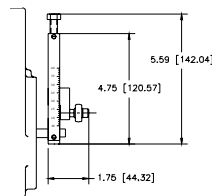
**D038** Rack Bellows for LA-1500. Boot that protects the rack from dirt and moisture.



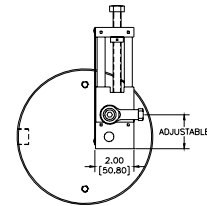
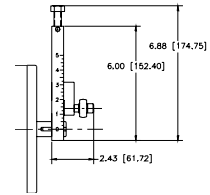
**D039** Female clevis with pin for LA-1500.



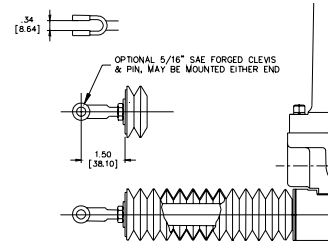
**D040** Adjustable Drive Arm for TA-1200. Adjustable range of 0.5 in. to 4.0 in., with a #10-28 tap, 0.75 deep.



**D041** Adjustable Drive Arm for SM-1500. Adjustable range of 0.5 in. to 4.0 in., with a #10-28 tap, 0.75 deep.



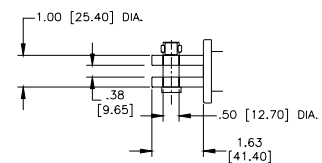
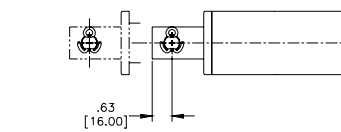
**D042** Clevis, one end for LA-1000 & LA-1100.



**D043** Clevis, both ends for LA-1000 & LA-1100.

**D044** Flange Mount for LA-2400. Mounting bracket which clamps to the tube of the actuator with a four bolt mounting face. (Not available for 6 in. stroke). See drawing for D034.

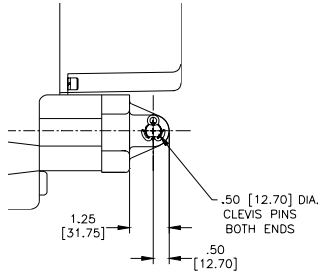
**D045** Female front clevis for LA-2400.



# OPTIONS

## Drive Arm/Adapter Clevis/Driven Arm

- D046** Female rear clevis for LA-2400.



- D047** Special front clevis for LA-2300 & LA-2400 (consult factory, customer must provide dimensions).

- D048** Special rear clevis for LA-2300 & LA-2400 (consult factory, customer must provide dimensions).

- D049** Special front clevis for LA-2500 (consult factory, customer must provide dimensions).

- D050** Special rear clevis for LA-2500 (consult factory, customer must provide dimensions).

- D051** Special front clevis for LA-2600 & LA-2700 (consult factory, customer must provide dimensions).

- D052** Special rear clevis for LA-2600 & LA-2700 (consult factory, customer must provide dimensions).

- D053** Special front clevis for LA-2900 (consult factory, customer must provide dimensions).

- D054** Special rear clevis for LA-2900 (consult factory, customer must provide dimensions).

- D055** Bellows for Linear Actuators (LA-2400/2500). Protects against dust and moisture when ram extends up.

- D056** Vertical Moisture Shield (LA-2300/2400). Protects against rain when ram extends up.

- D057** Adjustable drive arm for 1/2 inch output shaft of TA-1200. Used with R008.

- D058** Rotating clevis for LA-2400

- D059** Keyed drive arm for 370 ft. lb. SM-6000. *See drawing on page 53.*

- D060** Keyed drive arm for 800 ft. lb. SM-6000. *See drawing on page 53.*

- D061** Keyed drive arm for 1400 ft. lb. SM-6000. *See drawing on page 53.*

- D062** Keyed drive arm for 2500 ft. lb. SM-6000. *See drawing on page 53.*

- D063** Keyed drive arm for 4400 ft. lb. SM-6000. *See drawing on page 53.*

- D064** Keyed drive arm for 6200 ft. lb. SM-6000. *See drawing on page 53.*

- D065** Keyed drive arm for 8000 & 11000 ft. lb. SM-6000. *See drawing on page 53.*

- D066** Keyed drive arm for 16500 ft. lb. SM-6000. *See drawing on page 53.*

- D067** Keyed drive arm for 26000 ft. lb. SM-6000. *See drawing on page 53.*

- D068** Adapter assembly kit for 370 ft. lb. SM-6000

- D069** Adapter assembly kit for 800 & 1400 ft. lb. SM-6000

- D070** Adapter assembly kit for 2500 & 4400 ft. lb. SM-6000

- D071** Adapter assembly kit for 6200, 8000, 11000 & 16500 ft. lb. SM-6000

- D072** Adapter assembly kit for 26000 ft. lb. SM-6000

- D073** Driven arm for 370 ft. lb. SM-6000

- D074** Driven arm for 800 & 1400 ft. lb. SM-6000

- D075** Driven arm for 2500 & 4400 ft. lb. SM-6000

- D076** Driven arm for 6200, 8000, 11000 & 16500 ft. lb. SM-6000

- D077** Driven arm for 26000 ft. lb. SM-6000

- D078** Pedestal replacement & drive arm to replace SM-5100

- D079** Pedestal replacement & drive arm to replace SM-5200

- D080** Pedestal replacement & drive arm to replace SM-5300

- D081** Pedestal replacement & drive arm to replace SM-5400

- D082** Pedestal replacement & drive arm to replace Hagan Bailey

- D083** Adjustable length drive arm for 370 ft. lb. SM-6000

- D084** Adjustable length drive arm for 800 ft. lb. SM-6000

- D085** Adapter clevis kit for 370 ft. lb. SM-6000 (Used with D083)

- D086** Adapter clevis kit for 800 ft. lb. SM-6000 (Used with D084)

- D124** Adjustable length drive arm for 550 ft. lb. SM-6000

- D125** Adapter clevis kit for 550 ft. lb. SM-6000 (Used with D124)

- D126** Driven arm for 550 ft. lb. SM-6000

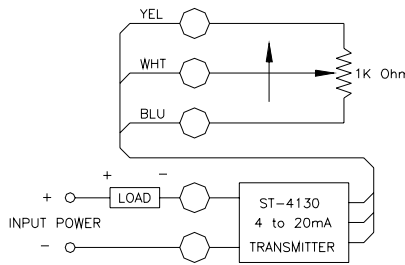
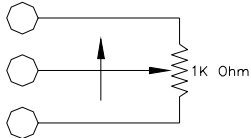
# OPTIONS

## Enclosure

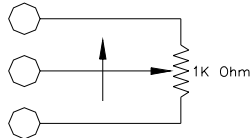
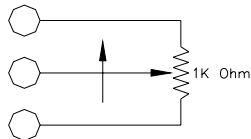
- E001** Watertight, NEMA 4 (IP65).
- E002** NEMA 12 (IP52).
- E003** Explosion Proof - Class 1, Div. 1, Groups C & D, indoor/outdoor (NEMA 7).
- E004** Dust-Ignition Proof - Class II, Div. 1, Groups E, F & G, indoor/outdoor (NEMA 9).
- E005** Group B enclosure for use in Hydrogen atmosphere (AC input only).
- E006** Clear, hinged door with keylock.

## Position Feedback

- F001** 1000 ohm, wire wound potentiometer.
- F005** Transmitter, 4-20 mA output

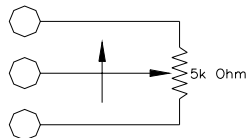


- F002** Tandem Potentiometer, 1000 ohms each, wire wound, (not available for units with internal amplifiers).



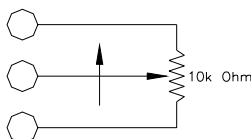
- F006** One Potentiometer, 1000 ohms plus 4-20 mA Transmitter (not available for units with internal amplifiers)

- F003** 5,000 ohm, wire wound potentiometer, (not avail. for units with internal amplifiers).



- F007** Hall Effect Contactless 4-20 mA Feedback.
- F008** Contactless 4-20 mA
- F009** Contactless 0-10Vdc
- F010** Anti Backlash Feedback Gearing (Single Turn)
- F011** Anti Backlash Feedback Gearing (Multi Turn)
- F012** Tandem Potentiometers, 5000 ohms (not available for units with internal amplifiers). See drawing for F002.

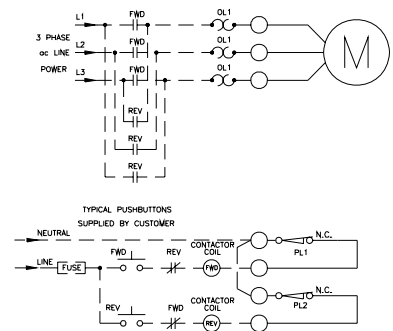
- F004** 10,000 ohm, wire wound potentiometer, (not available for units with internal amplifiers).



- F013** Tandem Potentiometers, 10,000 ohms (not avail. for units with internal amplifiers). See drawing for F002.
- F014** Absolute Encoder Contactless Feedback.
- F036** 4-20 mA output transmitter

## 3-Phase Controls

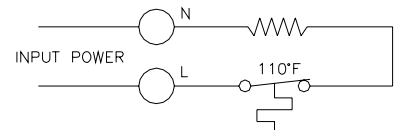
- G001** 3-Phase Contactor with Overloads



- G002** 120 Vac Control Transformer.
- G003** 240 Vac Control Transformer.

## Heater

- H001** Anti-Condensation Heater (24 VDC)



- H002** Anti-Condensation Heater (120 VAC). See drawing for H001.
- H003** Anti-Condensation Heater (240 VAC). See drawing for H001.

# OPTIONS

## Identification/ Certifications

- J001** CE Marking (AC input only)
- J002** Stainless Steel Tags
- J003** FM approved (Factory Mutual)
- J004** One year extended warranty.
- J005** Two year extended warranty.
- J006** ATEX Approval.

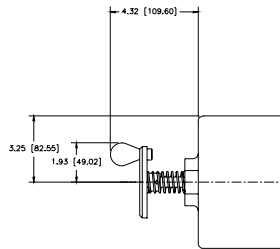
## Position Indicator

- P001** Local Position Indicator



## Handcrank

- K001** Manual Handcrank for SM-1500/1600 Series.



## Motor

- M001** 575 Motor - 3 Phase, for SM-5000 and LA-5000 Series actuators.

## Valve Mounting

- L001** Mounting of actuator to valve by customer. Compatible hardware supplied by Jordan Controls per customer specifications. Complete, certified valve drawings showing topworks detail must be submitted with order.
- L002** Valve provided by customer for mounting and set-up with actuator by Jordan Controls.
- L003** Valve provided by Jordan Controls, mounted and set-up with actuator per customer specifications.
- L004** No regulator
- L005** Rotate unit 180 degrees CW viewing actuator from top so conduit entry is 174 degrees from current.

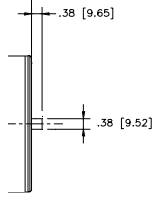
## Electro-Hydraulic

- N004** Failsafe, Spring return on loss of power
- N006** Quick Failsafe (see Table 2 for speed select)
- N007** Manual override (336 in. lbs. or less)
- N008** Manual override (460 to 1035 in. lbs.)
- N009** Manual override (1858 to 4513 in. lbs.)
- N011** 0-10 Vdc Command
- N013** Failsafe - Spring return on loss of power
- N015** Mounting direction, if not above valve
- N016** Silicone oil for low temperature operation, -40° F (-40° C)
- N017** Valve mounting kit
- N018** Manual override hand pump, NEMA 4
- N019** Thermal jacket for low, -40° F (-40° C) and high, 482° F (250° C) (for two hours) temperature applications
- N021** Geared manual override (speed/torque A-C)
- N022** Geared manual override (speed/torque D-E)
- N023** Geared manual override (speed/torque F-G)
- N024** Explosion-proof, Class 1, Zone 1 Aex md IIBT3Ta
- N025** M20 threaded cable entry
- N026** Bio-degradable fluid for food/beverage
- N027** Quick speed ESD failsafe - explosion proof
- N028** Overthrust protection using a pressure switch - NEMA 4 & Explosion-proof
- N030** Geared manual overdrive, Code A
- N031** Geared manual overdrive, Code B
- N032** Overthrust protection using a pressure switch
- N034** Split range command input
- N035** Manual override
- N036** Geared manual overdrive, Code C
- N039** Manual override hand pump, Explosion-proof
- N040** Remote mounted amplifier for EH-1000 Series

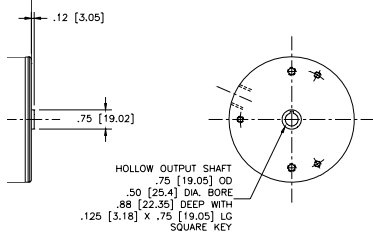
# OPTIONS

## Shaft

**R001** 3/8" Lg Shaft for SM-1100.

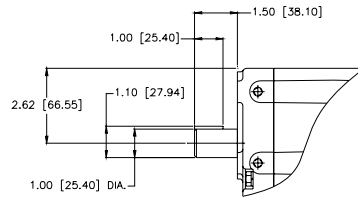


**R002** Hollow Shaft for SM-1100.

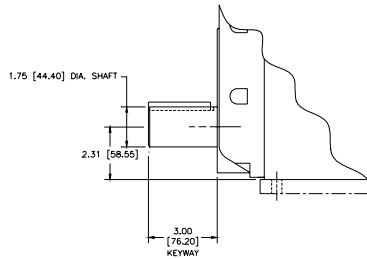


**R003** Hollow Shaft for SM-1500.

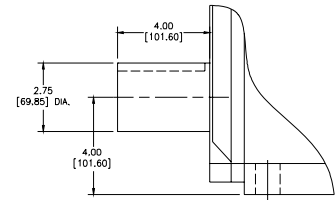
**R004** Keyed Shaft for SM-1700 & SM-5100.



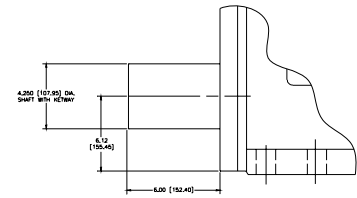
**R005** Keyed Shaft for SM-5200.



**R006** Keyed Shaft for SM-5300.



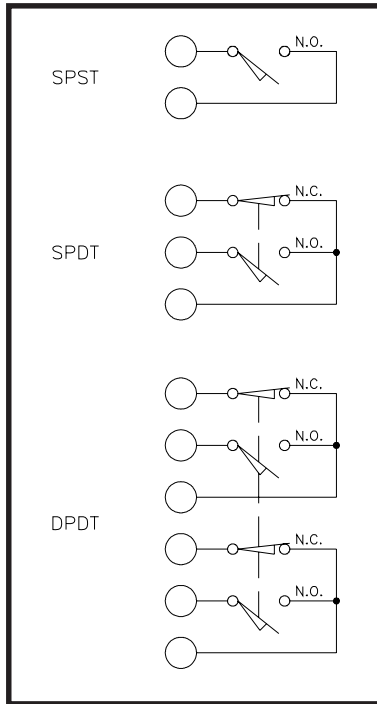
**R007** Keyed Shaft for SM-5400.



**R008** 1/2 inch Output Shaft for TA-1200 with woodruff key.



## Auxiliary Position Switches



Switch options are multiples of above configuration.

- S001** Two Adjustable Position Switches, SPDT, 20 Amp.
- S002** Two Adjustable Position Switches, DPDT, 20 Amp.
- S003** Four Adjustable Position Switches, SPDT, 20 Amp.
- S004** Four Adjustable Position Switches, DPDT, 20 Amp.
- S005** Aluminum Cam (*Up to 5.85 turns*)
- S006** Aluminum Feedback Frame (*Up to 5.85 turns*)
- S007** Aluminum Feedback Frame (*5.85 turns and greater*)
- S008** Two nonadjustable end of travel position switches, SPST, 10 Amp
- S009** Two Adjustable Position Switches, SPDT, 10 Amp.
- S010** Two Adjustable Position Switches, DPDT, 10 Amp.
- S011** Four Adjustable Position Switches, SPDT, 10 Amp.
- S012** Four Adjustable Position Switches, DPDT, 10 Amp.
- S013** Two nonadjustable end of travel position switches, SPDT, 10 Amp
- S014** Two nonadjustable end of travel position switches, SPDT, 20 Amp
- S015** Two nonadjustable torque limit switches (CW & CCW), SPST, 10 Amp
- S016** Two nonadjustable torque limit switches (CW & CCW), SPDT, 10 Amp
- S017** Two nonadjustable thrust limit switches (EXT & RET), SPDT, 10 Amp
- S018** Two nonadjustable thrust limit switches (EXT & RET), SPST, 10 Amp
- S019** Two nonadjustable end of travel position switches, SPST, 20 Amp
- S020** Two nonadjustable torque limit switches (CW & CCW), SPST, 20 Amp
- S021** Two nonadjustable thrust limit switches (EXT & RET), SPST, 20 Amp
- S042** Adjustable torque switches (J Series)

## Temperature Rating

- T001** Extended operating temperature of -40° F to 185° F (-40° C to 85° C).
- T002** Extended operating temperature of -40° F to 225° F (-40° C to 107° C).
- T003** Extended operating temperature of -40° F to 150° F (-40° C to 66° C). *Electro-Hydraulic Only.*

## Conduit Entries

- V001** 1/2 inch Conduit Entry Additional (1000 Series, LA2500).

## Painting/Coating

- W001** JCI Standard Polyurethane Blue
- W002** Two Part Epoxy
- W003** Food Grade Epoxy
- W004** Baked On Epoxy
- W005** Teflon

# OPTIONS

## Special Electrical Options

<b>X001</b>	24 Vdc power supply, 320 mA, 100-240 Vac input.				
<b>X002</b>	Loss of signal high or low.				
<b>X003</b>	Loss of signal low.				
<b>X004</b>	Voltage to current converter.				
<b>X005</b>	Loop powered 4 to 20 isolator, M-system HSN-IAA.				
<b>X006</b>	EC-10726 ± 15 Vdc power supply.				
<b>X007</b>	MOVs for AD-8000 (Required for output to solenoids or starters).				
<b>X008</b>	Fail open at loss of power and loss of command signal.				
<b>X009</b>	Fail close at loss of power and loss of command signal.				
<b>X010</b>	Command and feedback, 0-10 Vdc or 0-5 Vdc instead of 4-20 mA.				
<b>X012</b>	Signal conversion module, installed and wired to actuator.				
<b>X013</b>	2 wire incremental dc input.				
<b>X014</b>	3 wire incremental 120/240 Vac input.				
		<b>X015</b>	Battery Backup, only for 120/240 Vac, not available with X012.		
		<b>X016</b>	HART communication protocol.		
		<b>X017</b>	Process variable. (See page 7)		
		<b>X018</b>	Low current at null. (See page 7)		
		<b>X019</b>	AC Power Sensing with Output.		
		<b>X020</b>	Palm Pilot Setup for AD-9120.		
		<b>X021</b>	AD-8120 and AD-8220 replacement for use with AD-8240.		
		<b>X022</b>	Form C relay contact and powered retransmission of process input for MT-6400		
		<b>X023</b>	Special control outputs for MT-6400		
		<b>X025</b>	Relay contact to detect overtorque (stall) for SM-6000		
		<b>X026</b>	Remote Amplifier for SM-6000 (185° F)		
		<b>X027</b>	Remote Amplifier for SM-6000 (225° F)		
		<b>X028</b>	208 Vac input power for AD-9120		
		<b>X033</b>	Loss of line power relay for SM-6000		
		<b>X034</b>	Loss of signal relay for SM-6000		
		<b>X055</b>	Step down transformer for 480 to 240 Vac. Close coupled, 4400 ft. lbs. and higher.		
		<b>X057</b>	Step down transformer for 480 to 240 Vac. Remote-mounted, up to 2500 ft. lbs.		
		<b>X070</b>	Torque overload indicator for SM-6000.		
		<b>X088</b>	75% Duty cycle for JOM1 & JOMB (AC only).		
		<b>X089</b>	75% Duty cycle for JOM2 - JOM8 (AC only).		
		<b>X095</b>	75% Duty cycle (All Vdc, 12 Vac & 24 Vac).		

## Special Mechanical Options

<b>Y001</b>	Increased rotation for SM-1000 Series actuators to 33 turns.				
<b>Y002</b>	Helicoil Screw Thread Inserts (specify screw thread).				
<b>Y003</b>	Increased rotation for TA-1200 Series actuators to 135°.				
<b>Y004</b>	Metric mounting holes, 6mm (LF-1210)				
<b>Y005</b>	Metric mounting holes, 6mm (SM-1000)				
<b>Y006</b>	Metric mounting holes, 6mm (SM-1100)				
<b>Y008</b>	Metric mounting holes, 12mm (SM-1700)				
<b>Y009</b>	Metric mounting holes, 12mm (SM-5100)				
<b>Y010</b>	Metric mounting holes, 20mm (SM-5200)				
<b>Y011</b>	Metric mounting holes, 20mm (SM-5300)				
		<b>Y012</b>	Metric mounting holes, 26mm (SM-5400)		
		<b>Y013</b>	Metric mounting holes, 8mm (SM-1600)		
		<b>Y014</b>	Metric mounting holes, 6mm (LA-1000)		
		<b>Y015</b>	Metric mounting holes, 6mm (LA-1100)		
		<b>Y016</b>	Metric mounting holes, 8mm (LA-1500)		
		<b>Y017</b>	Metric mounting holes, 8mm (SM-3300)		
		<b>Y018</b>	Metric mounting holes, 8mm (LA-3300)		
		<b>Y019</b>	Metric mounting holes, 6mm (PT-1010 & PF-1010)		
		<b>Y020</b>	Metric mounting holes, 6mm (PF-1210)		
		<b>Y021</b>	Metric mounting holes, 6mm (PT-1330)		
		<b>Y022</b>	Faster speeds (SM-6000)		
		<b>Y023</b>	Extended rotation beyond 300° (SM-6000)		
		<b>Y024</b>	Mechanical stop for 370 ft. lb. SM-6000		
		<b>Y025</b>	Mechanical stop for 800 ft. lb. SM-6000		
		<b>Y026</b>	Mechanical stop for 1400 ft. lb. SM-6000		
		<b>Y027</b>	Mechanical stop for 2500 ft. lb. SM-6000		
		<b>Y028</b>	Mechanical stop for 4400 ft. lb. SM-6000		
		<b>Y029</b>	Mechanical stop for 6200 & 8000 ft. lb. SM-6000		
		<b>Y030</b>	Mechanical stop for 11000 ft. lb. SM-6000		
		<b>Y031</b>	Mechanical stop for 16500 ft. lb. SM-6000		
		<b>Y032</b>	Mechanical stop for 26000 ft. lb. SM-6000		
		<b>Y033</b>	M20 conduit entries for J Series		