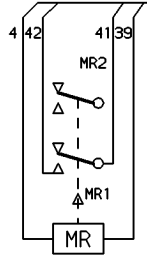
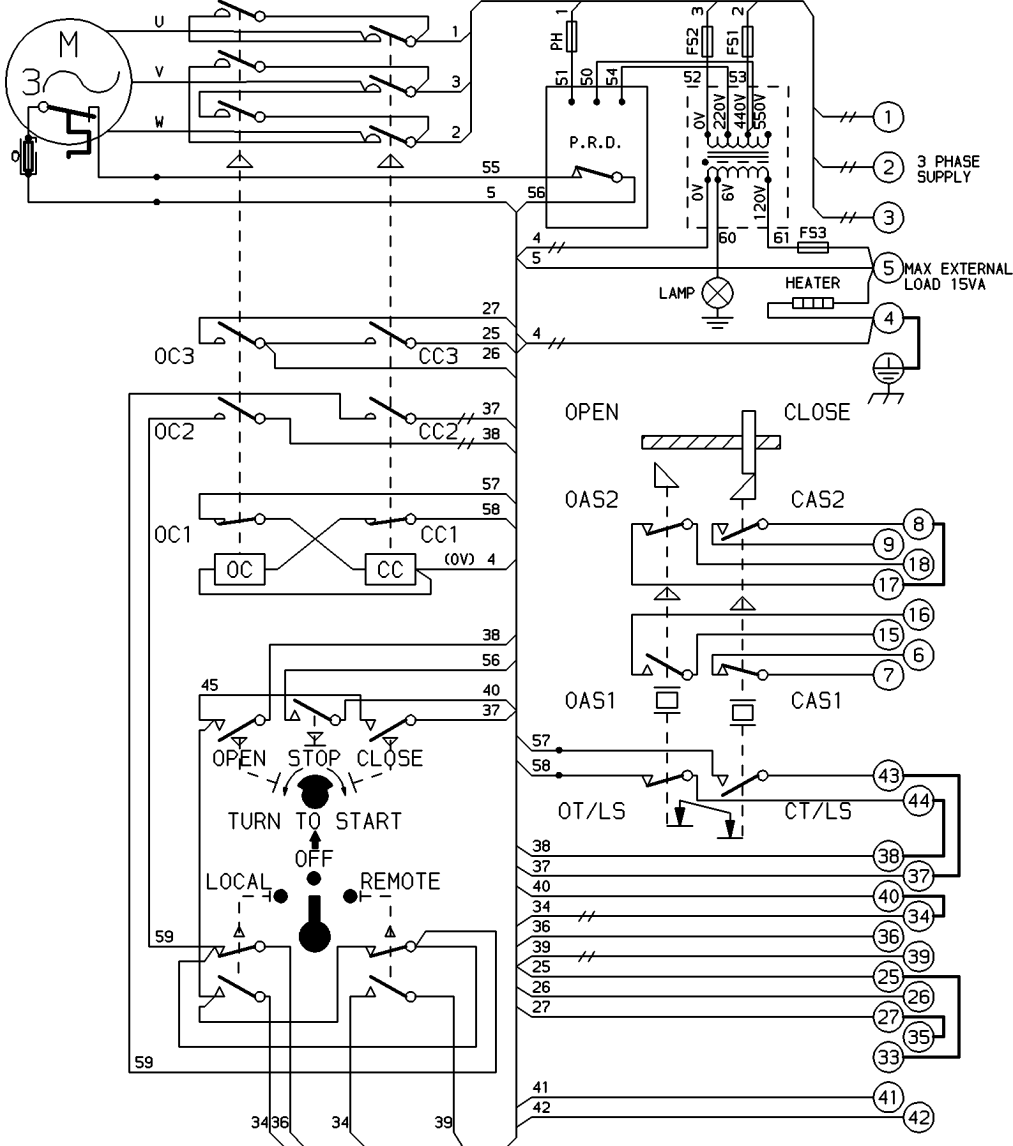


CIRCUIT IS DRAWN FOR A VALVE IN THE FULLY CLOSED POSITION
 FOR MODEL No. 98A99- P.R.D.s (BLACK CASE) WIRE 54 CONNECTS TO OV.



TORQUE AND LIMIT SWITCH OPERATION			
SWITCH	OPEN	INTER	SHUT
OT/LS	█	█	█
CT/LS	█	█	█
CAS1	█	█	█
CAS2	█	█	█
OAS1	█	█	█
OAS2	█	█	█

█ INDICATES SWITCH MADE

CIRCUIT DIAGRAM No - REV
1410-51-02

WARNING

DO NOT RUN ACTUATOR TO LIMITS WITH INCORRECT PHASE ROTATION

O - OPEN
 C - CLOSE
 OC - OPEN CONTACTOR
 CC - CLOSE CONTACTOR
 OC1 & CC1 - CONTACTOR INTERLOCK
 OC2 & CC2 - CONTACTOR MAINTAINING CONTACT
 OC3 & CC3 - CONTACTOR AUXILIARY CONTACT

T/LS - TORQUE/LIMITSWITCH
 AS1 - AUXILIARY LIMIT SWITCH MAKE CONTACT AT END OF TRAVEL
 AS2 - AUXILIARY LIMIT SWITCH BREAK CONTACT AT END OF TRAVEL
 █ - LINK SUPPLIED BY ROTORK

R - RELAY
 R1 & R2 - RELAY CONTACTS
 M - MONITOR

FOR TYPICAL REMOTE CONTROL INDICATING, MONITORING AND ALARM CIRCUITS SEE PUBLICATION AE4.0

FUSES FS1, 2, 3 & PH 500 mA

WIRES ARE IDENTIFIED AT EACH END BY TERMINAL No. OR BY WIRE No. SHOWN

—//— INDICATES TWO WIRES TERMINATED

C.S.A. NOTE.
 FOR C.S.A. ONLY FUSES FS1 & FS2 ARE NOT FITTED.

⊕ THERMAL FUSE. ATEX APPROVED UNITS ONLY.

CONTROL CIRCUIT SCHEMATIC
 No. WS1410-51

No 02	DATE	REVISION
	161203 D.A.	ATEX Thermal Fuse Added. Checked: PJW



ROTORK CONTROLS LTD
 BATH ENGLAND, BA1 3JQ.
 (Phone 01225-733200)

ROTORK CONTROLS INC
 ROCHESTER, NY 14624.
 (Phone 585-328-1550)

DRAWN BY K.S.
 DATE 161285
 CHECKED A.S.

SIMILAR TO --
 JOB No --
 M.I.No --

1400 SERIES SYNCROPAK WITH PRD & MONITOR RELAY.

CIRCUIT DIAGRAM No -REV
1410-51-02