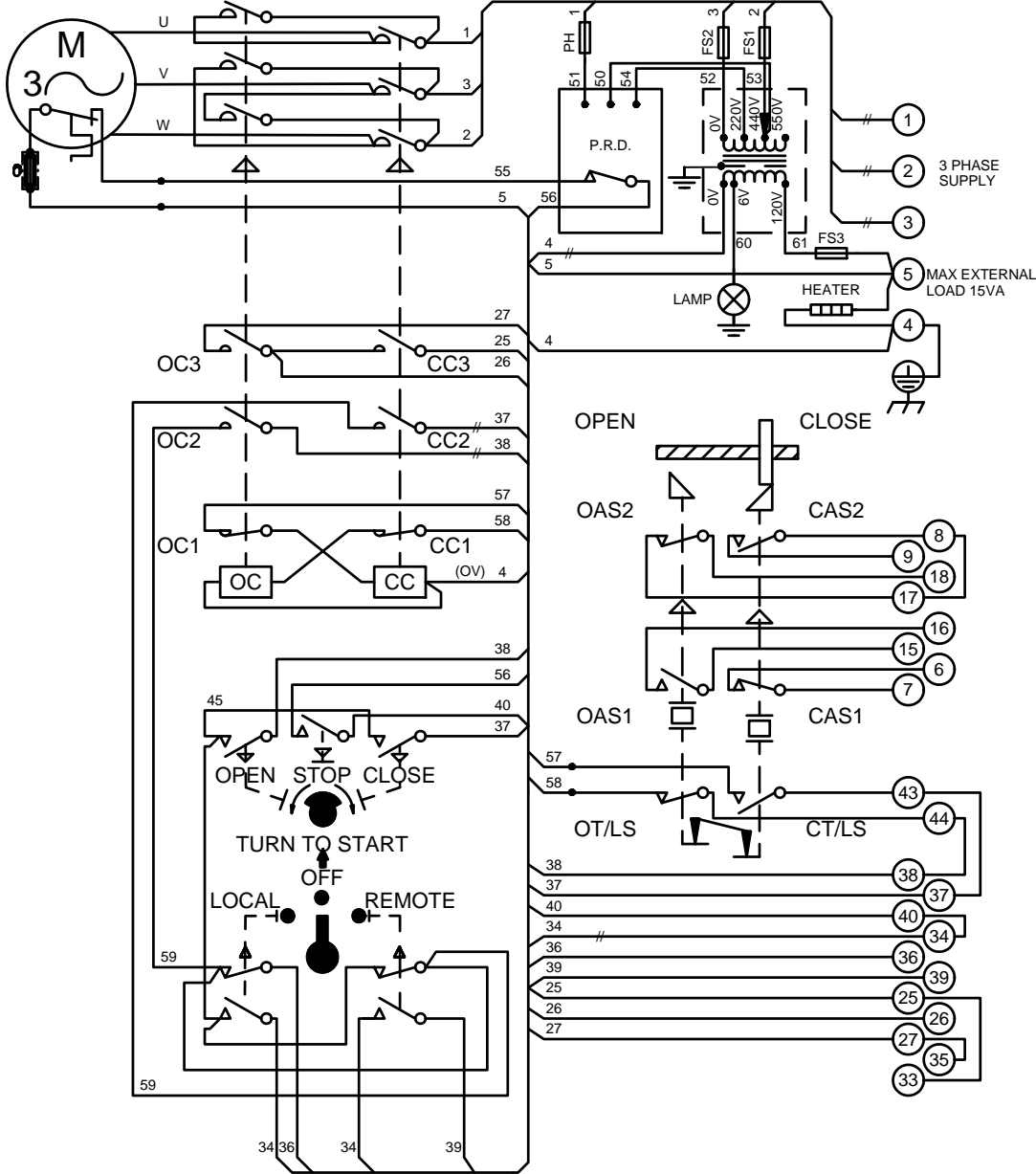


CIRCUIT IS DRAWN FOR A VALVE IN THE FULLY CLOSED POSITION

FOR MODEL No.98A99- P.R.D.s (BLACK CASE) WIRE 54 CONNECTS TO OV.



WARNING

DO NOT RUN ACTUATOR TO LIMITS WITH INCORRECT PHASE ROTATION

- O - OPEN
- C - CLOSE
- OC - OPEN CONTACTOR
- CC - CLOSE CONTACTOR
- OC1 & CC1 - CONTACTOR INTERLOCK
- OC2 & CC2 - CONTACTOR MAINTAINING CONTACT
- OC3 & CC3 - CONTACTOR AUXILIARY CONTACT
- T/LS - TORQUE/LIMITSWITCH
- AS1 - AUXILIARY LIMIT SWITCH MAKE CONTACT AT END OF TRAVEL
- AS2 - AUXILIARY LIMIT SWITCH BREAK CONTACT AT END OF TRAVEL
- LINK SUPPLIED BY ROTORK



FOR TYPICAL REMOTE CONTROL INDICATING, MONITORING AND ALARM CIRCUITS SEE PUBLICATION AE4.0

FUSES FS1,2,3 & PH 500 mA

WIRES ARE IDENTIFIED AT EACH END BY TERMINAL No. OR BY WIRE No. SHOWN

— INDICATES TWO WIRES TERMINATED

C.S.A. NOTE

FOR C.S.A. ONLY FUSES FS1 & FS2 ARE NOT FITTED.

CONTROL CIRCUIT SCHEMATIC No. WS1410-50

TORQUE AND LIMIT SWITCH OPERATION			
SWITCH	OPEN	INTER	SHUT
OT/LS	█	█	█
CT/LS	█	█	█
CAS1	█	█	█
CAS2	█	█	█
OAS1	█	█	█
OAS2	█	█	█

█ INDICATES SWITCH MADE

Iss	Date	Chkd	Revision Details
2	120511 PJW	JC1	Atex fuse added + converted to SE format.

www.rotork.com

ROTORK CONTROLS LTD BATH, BA1 3JQ ENGLAND Tel:01225-733200	ROTORK CONTROLS INC ROCHESTER NY 14624, USA Tel:585-247-2304
---	---

1400 SYNCROPAK + PRD .	
Drawn by: KS Date : 161285 Base WD: 1410-50 Job No : . MI No : .	Circuit Diagram No 1410-50 Issue No 2