

CIRCUIT IS DRAWN FOR A VALVE IN THE FULLY CLOSED POSITION

CIRCUIT DIAGRAM No - REV

1410-45-02

WARNING

DO NOT RUN ACTUATOR TO LIMITS WITH INCORRECT PHASE ROTATION

- O - OPEN
- C - CLOSE
- OC - OPEN CONTACTOR
- CC - CLOSE CONTACTOR
- OC1 & CC1 - CONTACTOR INTERLOCK
- OC2 & CC2 - CONTACTOR MAINTAINING CONTACT
- OC3 & CC3 - CONTACTOR AUXILIARY CONTACT

T/LS - TORQUE/LIMITSWITCH

AS1 - AUXILIARY LIMIT SWITCH MAKE CONTACT AT END OF TRAVEL

AS2 - AUXILIARY LIMIT SWITCH BREAK CONTACT AT END OF TRAVEL

— LINK SUPPLIED BY ROTORK

R - RELAY

R1 & R2 - RELAY CONTACTS

M - MONITOR

FOR TYPICAL REMOTE CONTROL INDICATING, MONITORING AND ALARM CIRCUITS SEE PUBLICATION AE4.0

FUSES FS1, 2, 3 500 mA

WIRES ARE IDENTIFIED AT EACH END BY TERMINAL No. OR BY WIRE No. SHOWN

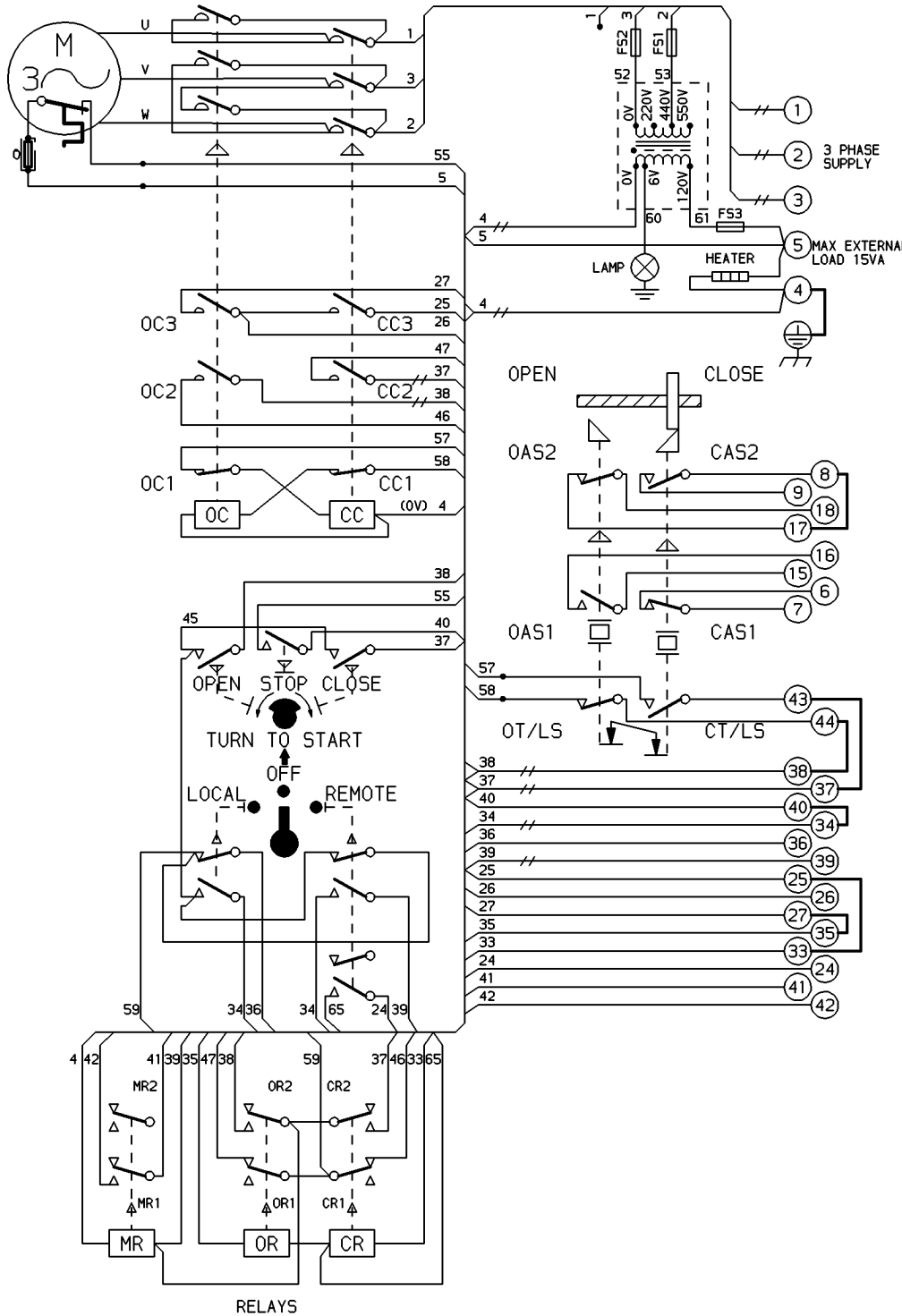
— INDICATES TWO WIRES TERMINATED

C.S.A. NOTE.

FOR C.S.A. ONLY FUSES FS1 & FS2 ARE NOT FITTED.

 THERMAL FUSE. ATEX APPROVED UNITS ONLY.

CONTROL CIRCUIT SCHEMATIC No. WS1410-45



TORQUE AND LIMIT SWITCH OPERATION			
SWITCH	OPEN	INTER	SHUT
OT/LS	█	█	█
CT/LS	█	█	█
CAS1	█	█	█
CAS2	█	█	█
OAS1	█	█	█
OAS2	█	█	█

█ INDICATES SWITCH MADE

No	DATE	REVISION
02	230104 P.J.W	ATEX THERMAL FUSE ADDED CHECKED D.A

rotork

ROTORK CONTROLS LTD
BATH ENGLAND, BA1 3JQ.
(Phone 01225-733200)

ROTORK CONTROLS INC
ROCHESTER, NY 14624.
(Phone 585-328-1550)

DRAWN BY KS
DATE 101285
CHECKED AS

SIMILAR TO --
JOB No --
M.I.No --

1400 SERIES SYCROPAK WITH INTERPOSING & MONITOR RLY

CIRCUIT DIAGRAM No -REV
1410-45-02