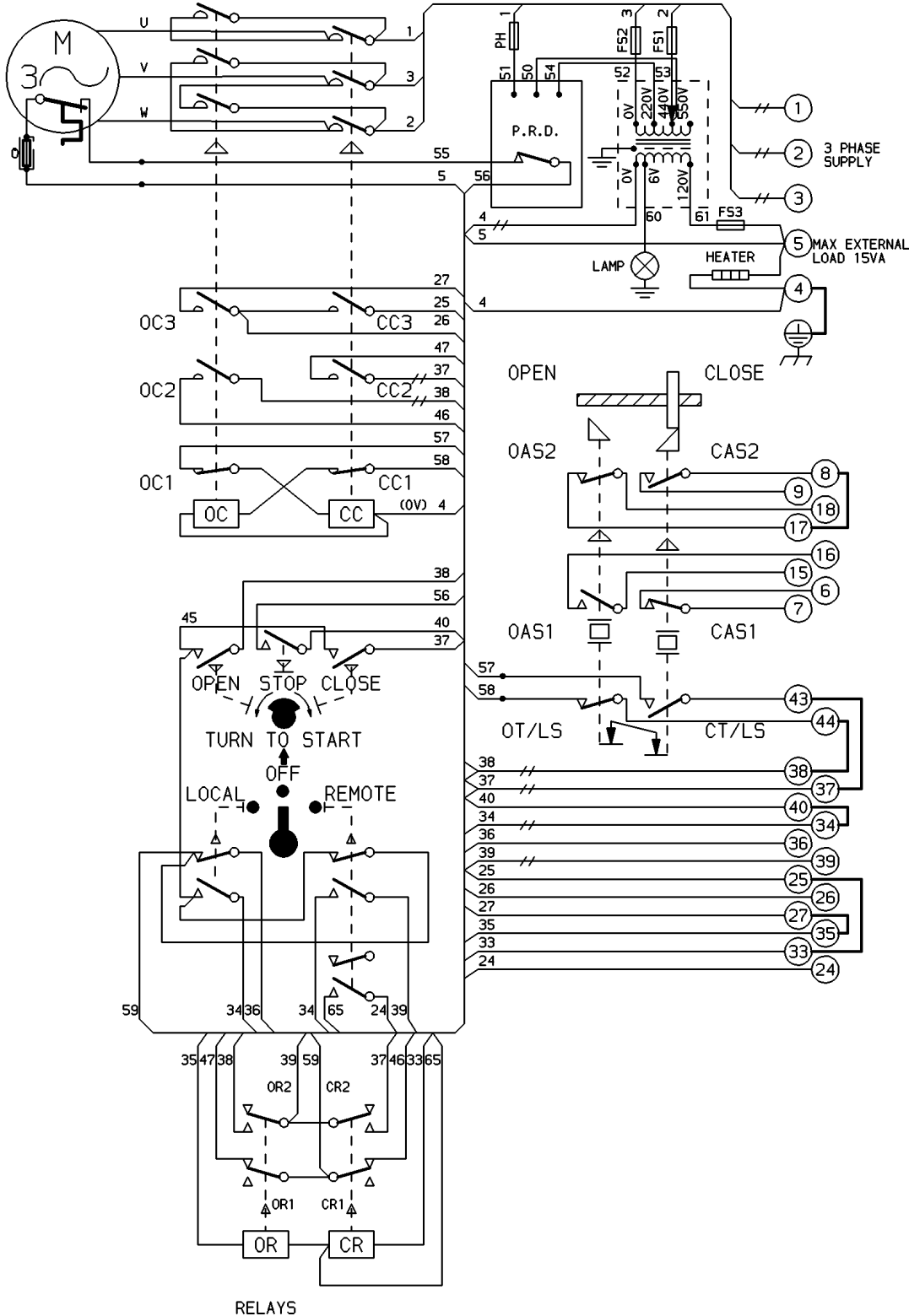


CIRCUIT IS DRAWN FOR A VALVE IN THE FULLY CLOSED POSITION

FOR MODEL No.98A99- P.R.D.s (BLACK CASE) WIRE 54 CONNECTS TO 0V.



CIRCUIT DIAGRAM No - REV  
**1410-52-04**

**WARNING**

- DO NOT RUN ACTUATOR TO LIMITS WITH INCORRECT PHASE ROTATION
- O - OPEN
- C - CLOSE
- OC - OPEN CONTACTOR
- CC - CLOSE CONTACTOR
- OC1 & CC1 - CONTACTOR INTERLOCK
- OC2 & CC2 - CONTACTOR MAINTAINING CONTACT
- OC3 & CC3 - CONTACTOR AUXILIARY CONTACT
- T/LS - TORQUE/LIMITSWITCH
- AS1 - AUXILIARY LIMIT SWITCH MAKE CONTACT AT END OF TRAVEL
- AS2 - AUXILIARY LIMIT SWITCH BREAK CONTACT AT END OF TRAVEL
- LINK SUPPLIED BY ROTORK
- R - RELAY
- R1 & R2 - RELAY CONTACTS
- FOR TYPICAL REMOTE CONTROL INDICATING, MONITORING AND ALARM CIRCUITS SEE PUBLICATION AE4.0
- FUSES FS1, 2, 3 & PH 500 mA
- WIRES ARE IDENTIFIED AT EACH END BY TERMINAL No. OR BY WIRE No. SHOWN
- // INDICATES TWO WIRES TERMINATED

C.S.A. NOTE.  
FOR C.S.A. ONLY FUSES FS1 & FS2 ARE NOT FITTED.  
THERMAL FUSE.ATEX APPROVED UNITS ONLY.

CONTROL CIRCUIT SCHEMATIC  
No. WS1410-52

TORQUE AND LIMIT SWITCH OPERATION			
SWITCH	OPEN	INTER	SHUT
OT/LS			
CT/LS			
CAS1			
CAS2			
OAS1			
OAS2			

INDICATES SWITCH MADE

No <b>04</b>	DATE 120903 P.J.W	REVISION ATEX THERMAL FUSE ADDED. CHECKED K.S
-----------------	-------------------------	---



ROTORK CONTROLS LTD  
BATH ENGLAND, BA1 3JQ.  
(Phone 01225-733200)

ROTORK CONTROLS INC  
ROCHESTER, NY 14624.  
(Phone 585-328-1550)

DRAWN BY K.S  
DATE 16.12.85  
CHECKED A.S

SIMILAR TO --  
JOB No --  
M.I.No --

**1400 SERIES SYNCROPAK WITH PRD & INTERPOSING RELAYS.**

CIRCUIT DIAGRAM No -REV  
**1410-52-04**