

RATIO	M.A.	C.O.G.			MAX OUTPUT TORQUE Nm (lbs.ft)
		X	Y	Z	
8	7.290	0	83	148	8135 (6000)
10	8.993	0	83	148	8135 (6000)
12	10.649	0	83	148	8135 (6000)
15	13.632	0	83	148	8135 (6000)

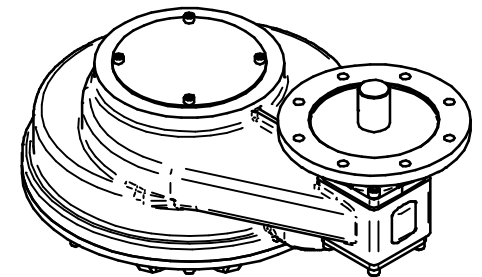
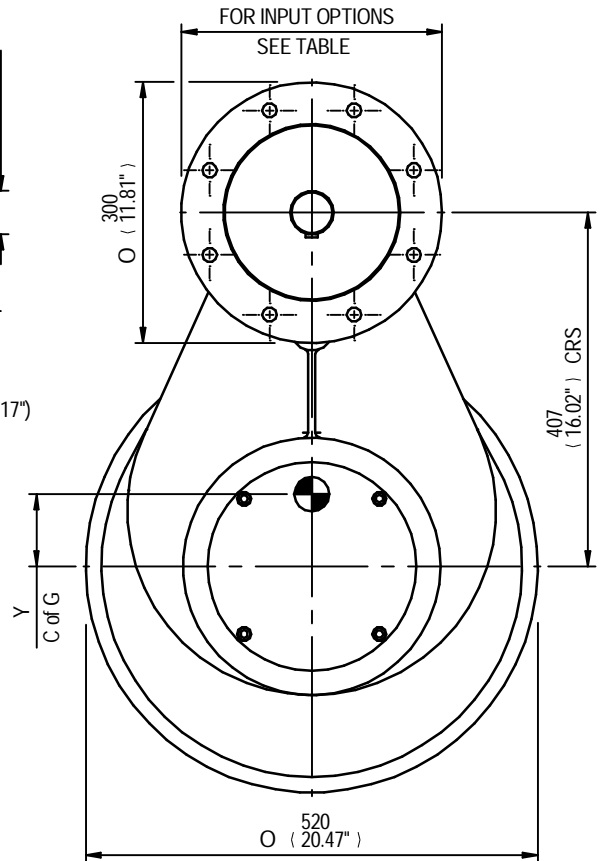
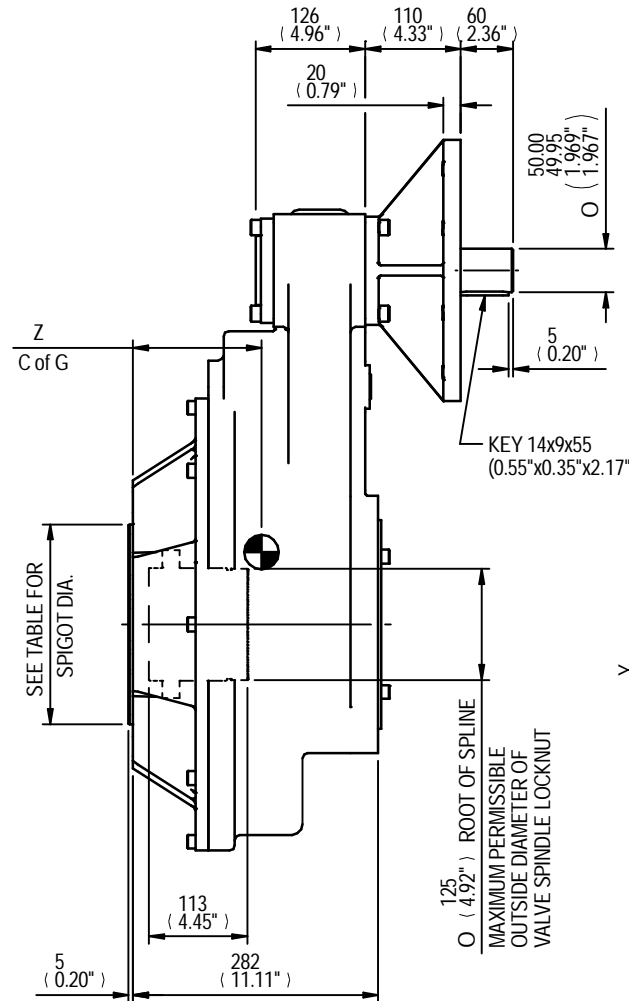
MOUNTING HOLES CAN BE POSITIONED ON CTRS BY REMOVING 8 BOLTS INDICATED AND REPOSITIONING

MAX BORE SQ KEY			MAX BORE RECTANGULAR KEY		
STD	BORE	KEY	STD	BORE	KEY
BS4235	-	-	BS4235	96.0	28 x 16
BS46	3.500"	7/8" SQ	BS46	3.625"	1" x 3/4"
ANSI B17.1	3.500"	7/8" SQ	ANSI B17.1	3.750"	7/8" x 5/8"

MAX STEM SCREW ACCEPTANCE DIA	
1" x 3/4"	100 (3.875")

	INPUT FLANGE DETAILS					KEY
	FLANGE O/DIA. & THICKNESS	SHAFT DIA.	RECESS DIA.	RECESS DEPTH	HOLE DETAILS 22.5°(OFF CENTRES)	
ISO F25	Ø300 X 20	Ø50.00-0.05	Ø200.10+0.10	5	8 HOLES Ø16.5 (Ø0.65")	14x9x55
	(Ø11.81" X 0.79")	(Ø1.969"-0.002")	(Ø7.878"+0.004")	(0.20")	ON Ø254.0 (Ø10.00") P.C.	(0.55"x0.35"x2.17")
FA25	Ø300 X 20	Ø50.00-0.05	Ø152.37+0.10	5	8 HOLES Ø16.5 (Ø0.65")	14x9x55
	(Ø11.81" X 0.79")	(Ø1.969"-0.002")	(Ø5.999"+0.004")	(0.20")	ON Ø254.0 (Ø10.00") P.C.	(0.55"x0.35"x2.17")

	BASEPLATE DETAILS	
	SPIGOT DIA.	HOLE DETAILS (22.5° OFF CENTRES)
ISO F30	Ø229.95-0.05	8 HOLES M20x25 (0.98") DEEP
	(Ø9.053"-0.002")	ON Ø298.0 (Ø11.73") P.C.
FA30	Ø177.70-0.05	8 HOLES 3/4"UNCx25 (0.98") DEEP
	(Ø6.996"-0.002")	ON Ø298.5 (Ø11.75") P.C.



**rotork gears**

IS12 GEARBOX  
F25/FA25 INPUT F30/FA30 OUTPUT

DETAILS SUBJECT TO CHANGE WITHOUT PRIOR NOTICE

FOR UP TO DATE DETAILS VISIT [www.rotork.com](http://www.rotork.com)

APPROX WEIGHT 184.7 kg

DRAWING No	PUBIS12-F25-F30	Regina House Ring Road Bramley Leeds LS134ET United Kingdom
ISSUE	A	
DATE	22/06/2011	